



MASON INDUSTRIES, Inc.

Manufacturers of Vibration Control Products

350 Rabro Drive
Hauppauge, NY 11788
631/348-0282
FAX 631/348-0279
Info@Mason-Ind.com
www.Mason-Ind.com

2101 W. Crescent Ave., Suite D
Anaheim, CA 92801
714/535-2727
FAX 714/535-5738
Info@MasonAnaheim.com
www.MasonAnaheim.com

STEEL CHANNELS
with DOUBLE
DEFLECTION
NEOPRENE
MOUNTINGS

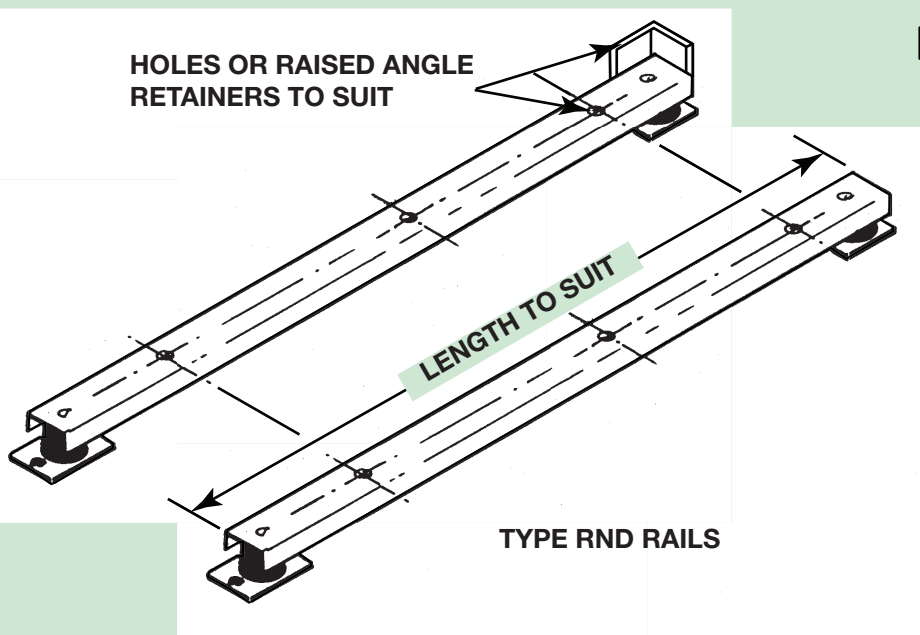
TYPE

RND RAILS

DATA SHEET DS-804

Type RND rails are structural steel channels furnished with double deflection neoprene mountings bolted to the web. All metal mounting parts are neoprene covered to avoid corrosion and provide a bottom friction surface. They need not be bolted to the floor but bolt holes are provided for those areas where bolting down is specified.

RND rails are used to extend equipment bases, eliminating over-hand and improving weight distribution on the mountings as in the case of close coupled pumps or utility sets. They may also be used to reinforce bases that require supplementary stiffening between mounting locations.



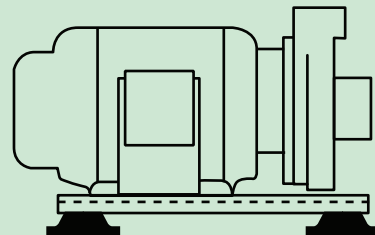
| RAIL SIZE | W | H | MAX. DEFL. |
|-----------|----|-------|------------|
| RND-2 | 2" | 15/8" | 0.35" |
| RND-3 | 3" | 2" | 0.40" |
| RND-4 | 4" | 3" | 0.50" |

NOTE:

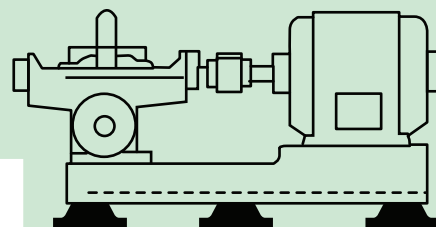
- RND-2** Rails are intended for light equipment only and seldom furnished in lengths longer than 24". Usual maximum load 150lbs. per rail.
- RND-3** Rails are used under intermediate weight equipment within a five foot average length limitation. Usual maximum load 1,000 lbs. per rail.
- RND-4** Rails are used where rail rigidity is important because of length or base configuration. Furnished in any length with capacities to suit.

Other Channel Sizes Furnished on Request.

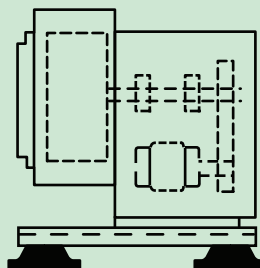
TYPICAL "RND" RAIL APPLICATIONS



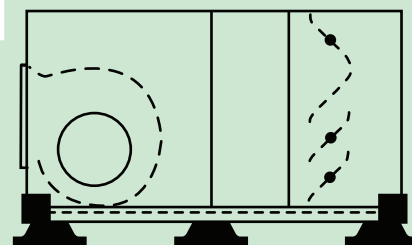
CLOSE COUPLED PUMP



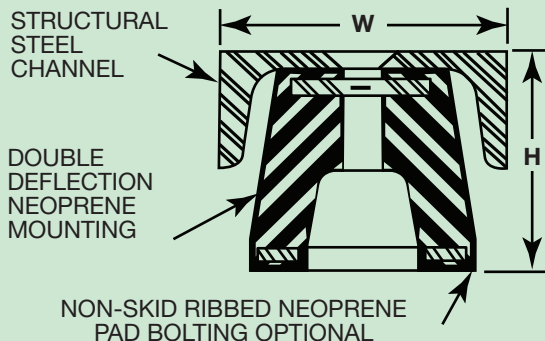
SPLIT CASING PUMP



UTILITY SET



HV UNIT



RND RAIL CROSS SECTION