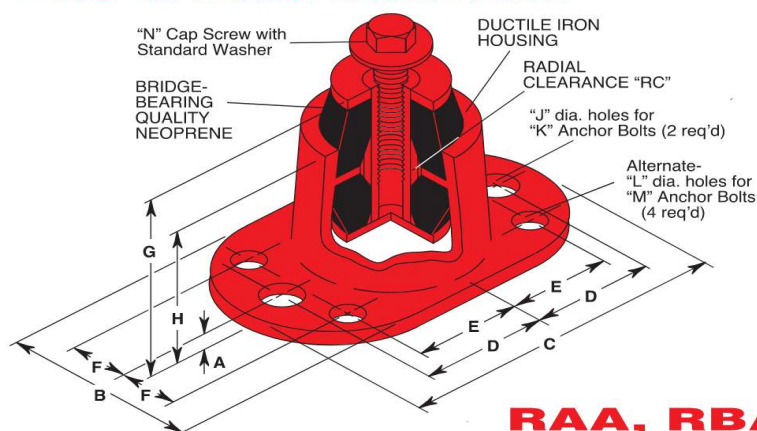


**NOTE: SUPPORTING SURFACES MUST BE FLAT AND LEVEL UNDER MOUNTS.**

1. **BLOCK UP BASE OR EQUIPMENT TO OPERATING HEIGHT AS SHOWN ON THE DRAWINGS.**
2. **SET MOUNTS UNDER BRACKET, BASE OR EQUIPMENT HOLES AS INDICATED. MARK THE ANCHOR LOCATIONS, REMOVE MOUNTS, INSTALL ANCHORS AND RESET MOUNTS. INSERT LOCKING CAPSCREW (WITH WASHER) THRU THE HOLE AND THREAD INTO THE TAPPED HOLE IN THE CAPTIVE STEEL INSERT.**
3. **TIGHTEN CAPSCREWS TO LOCK THE MOUNT TO THE EQUIPMENT .**

## BR CAPTIVE NEOPRENE MOUNTINGS



## RAA, RBA, RCA & RDA NEOPRENE SEISMIC MOUNTINGS

