



**MASON INDUSTRIES, Inc.**  
 Manufacturers of Vibration Control Products  
 350 Rabro Drive 708 N. Valley St., Suite K  
 Hauppauge, NY 11788 Anaheim, CA 92801  
 516/348-0282 714/535-2727  
 FAX 516/348-0279 FAX 714/535-5738  
 TELEX 96-8464

CERTIFIED FOR

JOB NAME \_\_\_\_\_

CUSTOMER \_\_\_\_\_

CUSTOMER P.O. \_\_\_\_\_

MASON S.O. \_\_\_\_\_

DWG No. \_\_\_\_\_

TYPE

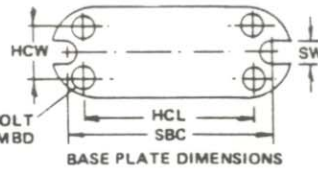
**C**

HOUSE  
SPRIN  
MOUNTS

**TOP ACCESS ADJUSTMENT BOLT**

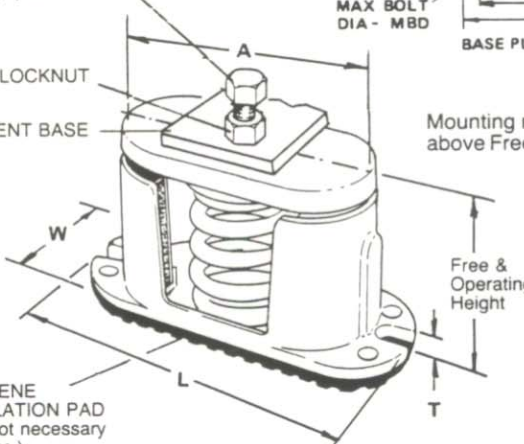
Turn clockwise to load spring & maintain Free & Operating Height. Bolt length is suitable for 1" maximum Equipment Base thickness.

LOCKNUT  
EQUIPMENT BASE



Mounting may be operated 1/2" above Free & Operating Height

NON-SKID NEOPRENE ACOUSTICAL ISOLATION PAD (Bolting to floor is not necessary in indoor applications.)



All springs have additional travel to solid equal to 50% of the rated deflection.

Illustration shows single spring C-A, C-B or C-C mount. C-D has 2 springs and C-E has 4.

**TYPE C LOAD RATINGS**

C Size	Rated Capacity (lbs)	Rated Defl (in)	Spring Constant (lbs/in)	Spring Color
A-45	45	1.60	28	Blue
A-75	75	1.50	50	Orange
A-125	125	1.33	94	Brown
A-200	200	1.15	174	Black
A-310	310	1.00	310	Yellow
A-400	400	1.00	400	Green
A-510	510	1.00	510	Red
A-625	625	1.00	625	White
B-65	65	2.10	31	Brown
B-85	85	2.10	40	(A)
B-115	115	2.00	57	Silver
B-150	150	2.00	75	Orange
B-280	280	1.60	174	Green
B-450	450	1.31	344	Red
B-750	750	1.12	670	White
B-1000	1000	1.00	1000	Blue
B-1250	1250	1.00	1250	Gray
B-1650	1650	1.00	1650	Black
C-1000	1000	1.00	1000	Black
C-1350	1350	1.00	1350	Yellow
C-1750	1750	1.00	1750	Black*
C-2100	2100	1.00	2100	Yellow*
C-2385	2385	1.00	2385	Yellow**
C-2650	2650	1.00	2650	Red*
C-2935	2935	1.00	2935	Red**
D-3500	3500	1.00	3500	Black*
D-4200	4200	1.00	4200	Yellow*
D-4770	4770	1.00	4770	Yellow**
D-5300	5300	1.00	5300	Red*
D-5870	5870	1.00	5870	Red**
E-7000	7000	1.00	7000	Black*
E-8400	8400	1.00	8400	Yellow*
E-9540	9540	1.00	9540	Yellow**
E-10600	10600	1.00	10600	Red*
E-11740	11740	1.00	11740	Red**

**TYPE C DIMENSIONS (inches)**

C Size	L	W	Free & Op. Ht.	T	MBD	SBC	SW	HCW	HCL	A	Adjustment Bolt
A-45-400†	5 3/4	2 1/8	4	1/2	1/4	5	5/16	1	4 3/4	4	3/8 x 4
A-510-625	5 3/4	2 1/8	4 3/8	1/2	1/4	5	5/16	1	4 3/4	4	3/8 x 4
B	8 1/4	2 3/4	5 1/4	1/2	3/8	7 1/4	7/16	1 1/2	6 1/2	5 3/4	1/2 x 4
C	8 7/8	3 1/2	5 1/2	9/16	3/8	7 7/8	7/16	1 3/4	7 1/4	6 5/8	5/8 x 4 1/2
D	12	3 1/2	6	9/16	3/8	11	7/16	1 3/4	10 3/8	9 3/4	5/8 x 4 1/2
E	12 3/4	6 5/8	6	5/8	1/2	—	—	5 1/8	11 3/8	12 1/8	3/4 x 5

\*with RED spring inside  
 \*\*with GREEN spring inside  
 (A) White w/ Black Stripe

†If using 45 thru 400 with 510 or 625, Free & Oper. Height is 4 3/8".

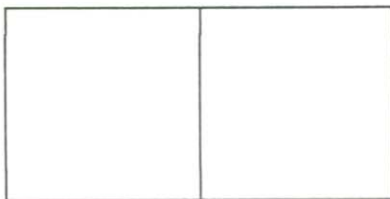
**CERTIFICATION DATA**

\_\_\_\_\_ inch SPECIFIED DEFLECTION

TAG \_\_\_\_\_

UNIT \_\_\_\_\_

1. Block unit to free and operating height.
2. Locate mount under unit and screw adjustment bolt through equipment base hole into mount (Lock nut at top of bolt).
3. Turn adjustment bolt clockwise on each mount 2 or 3 turns.
4. Repeat #3 until blocks can be removed.
5. Lock setting in place with lock nut.



PLAN VIEW OF MOUNT LOCATION

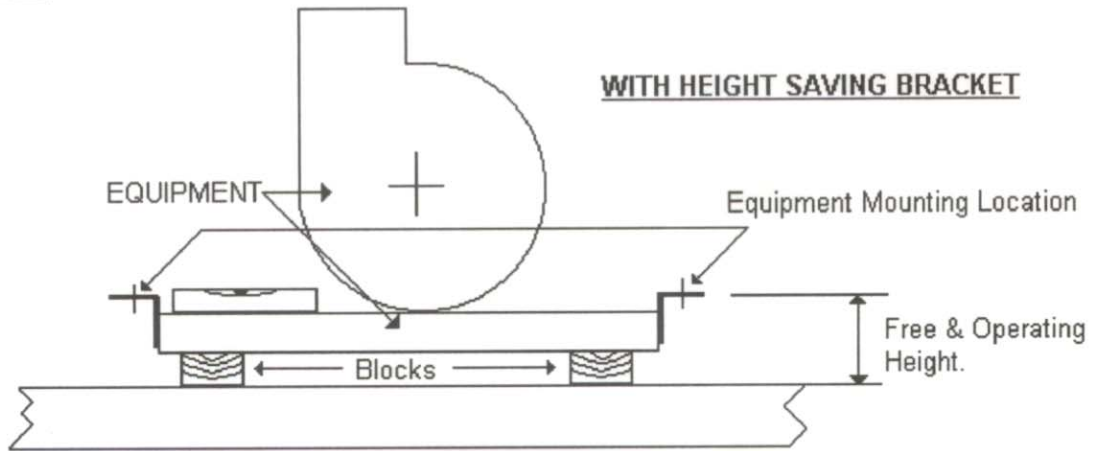
1	2
3	4
5	6
7	8
9	10
MATERIAL FOR ONE SET _____ SETS REQUIRED	

DWN	CHKD	DATE
-----	------	------

DWG No. \_\_\_\_\_

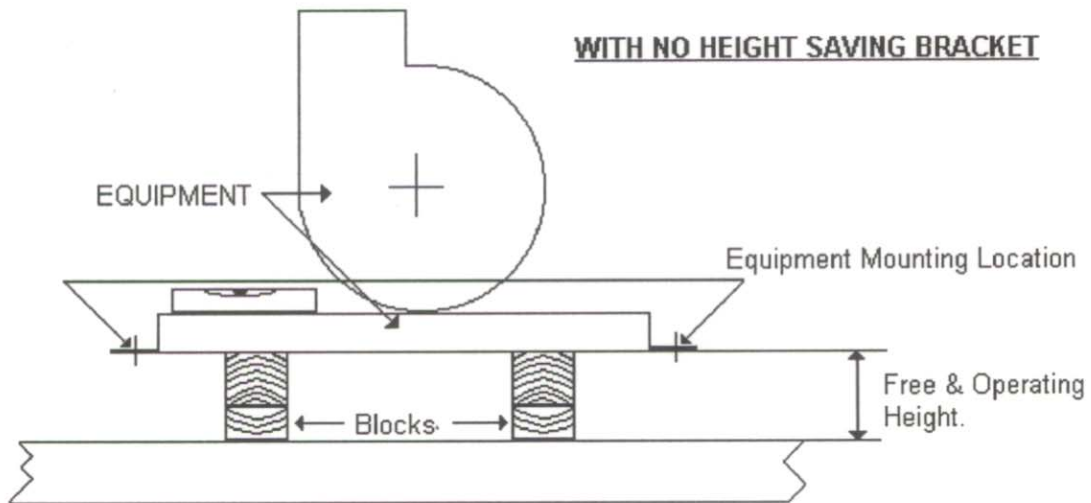
**INSTALLATION INSTRUCTIONS FOR MASON 'C' TYPE BASE MOUNTED  
SPRING ISOLATORS**

**Step 1.**

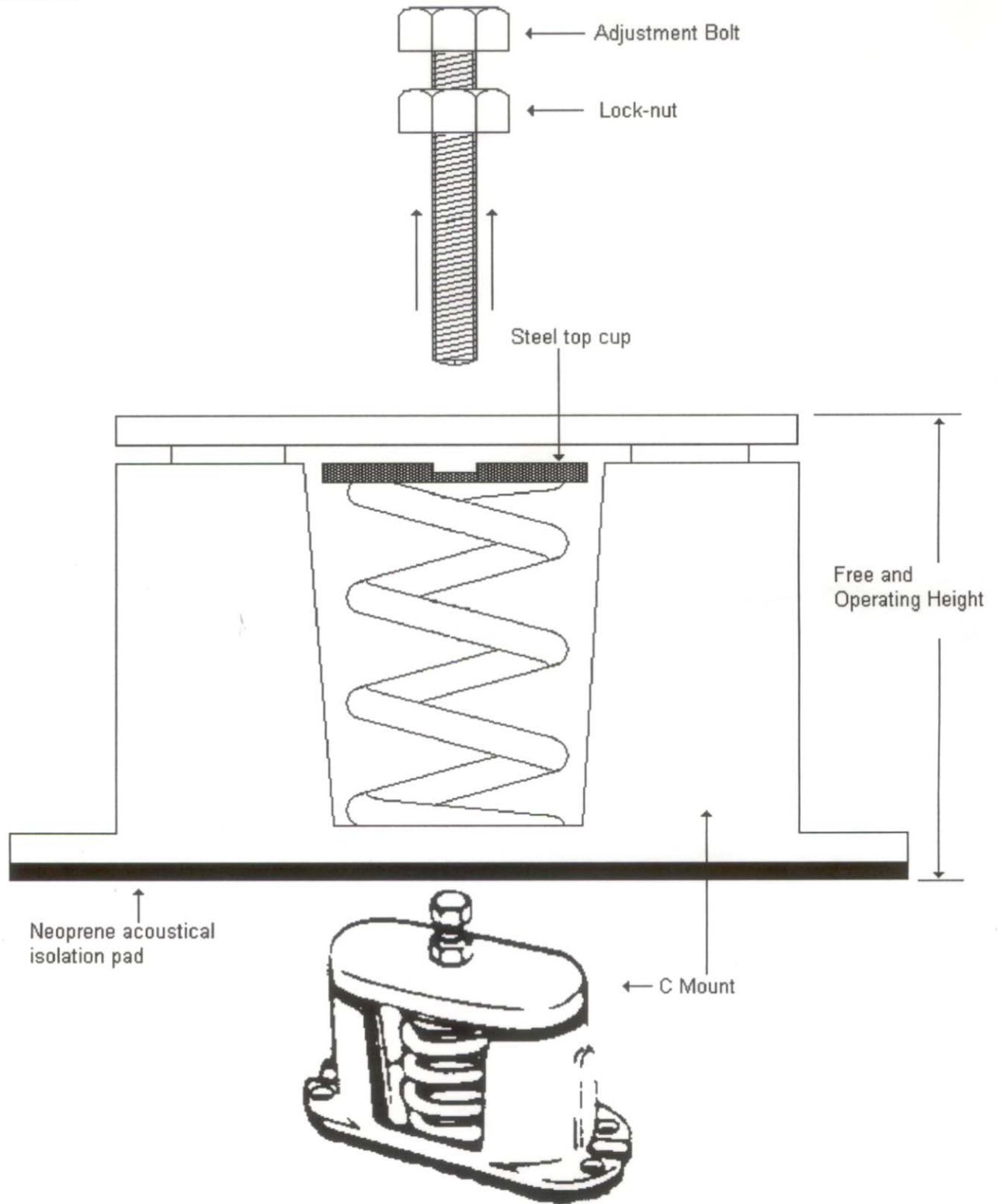


- Block equipment level and to correct operating height.
- Make sure that spring isolator attachment points are set to required free and operating height for selected spring isolator.

OR

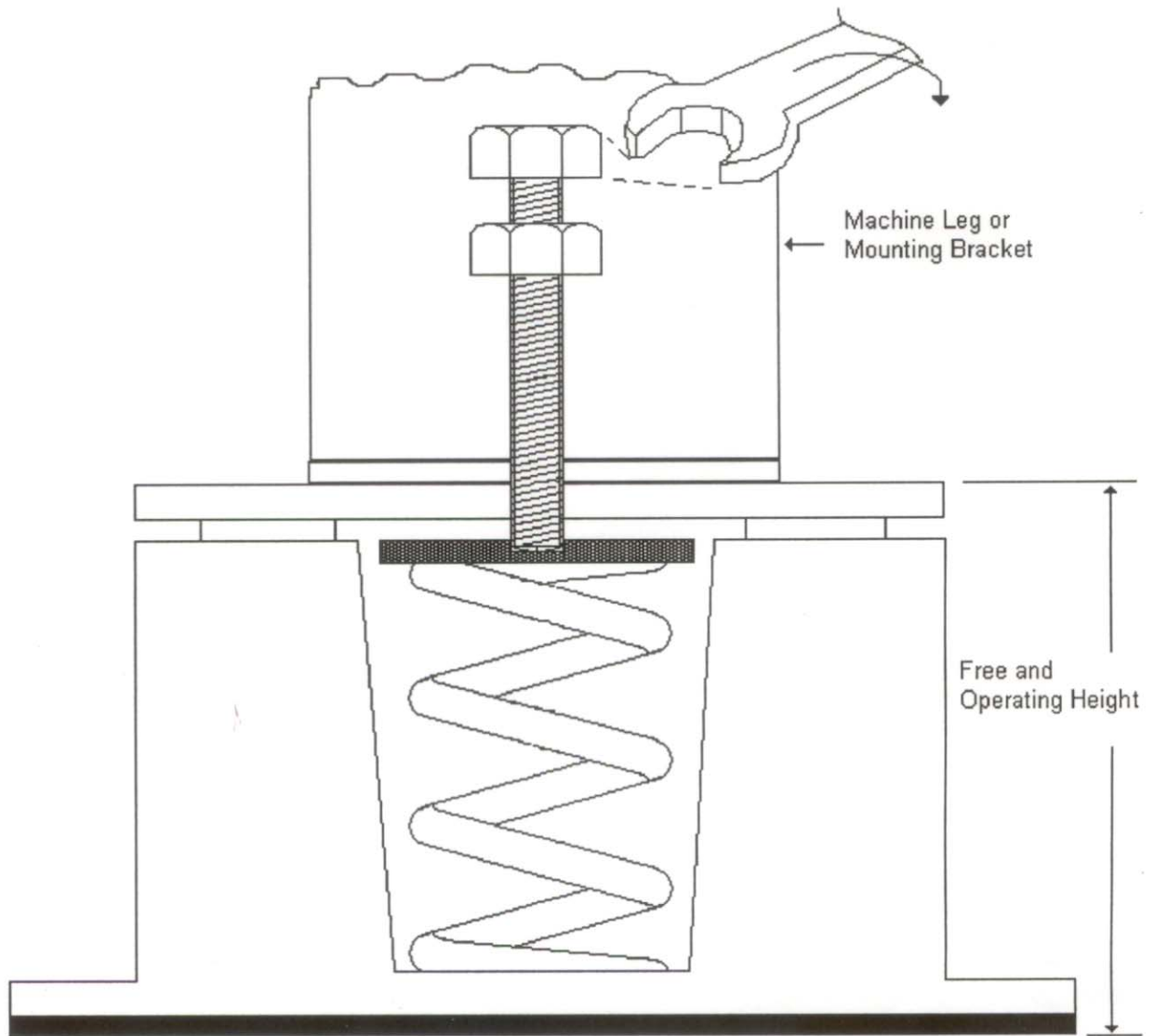


**Step 2.**



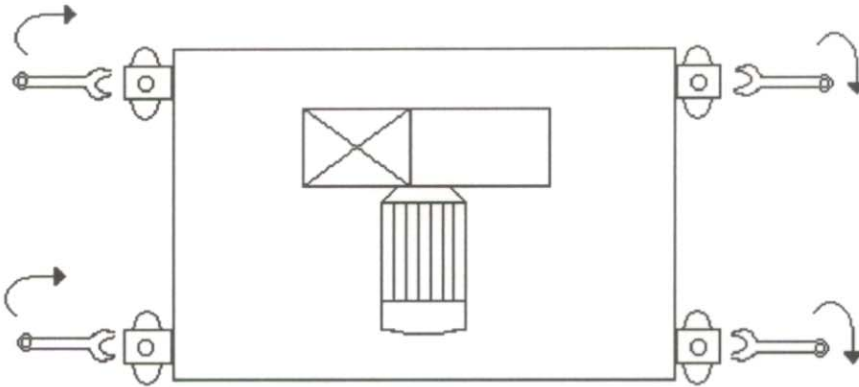
- Remove adjustment bolt, making sure lock nut is near top of the bolt.

**Step 3.**

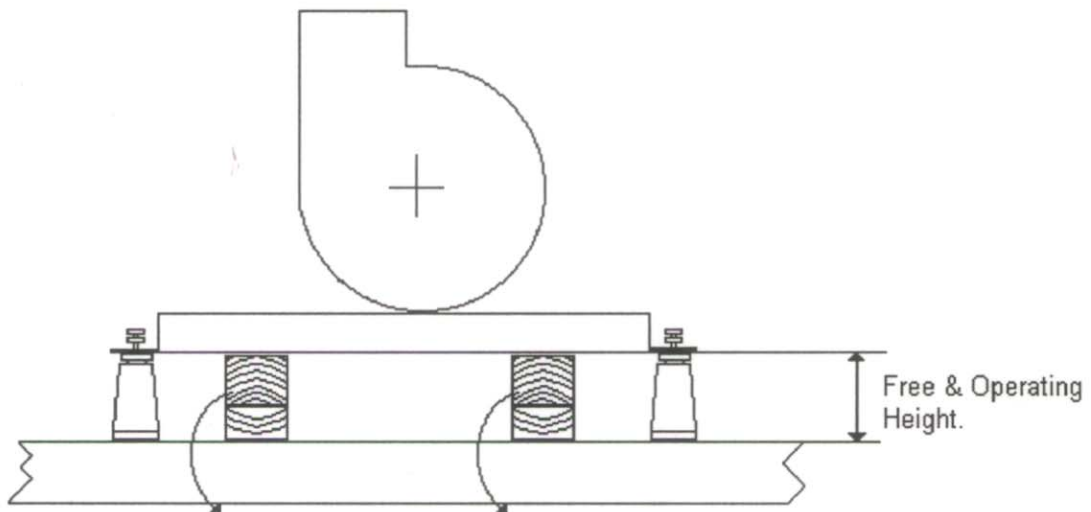


- Locate 'C' Type spring isolators under attachment points of equipment.
- Screw adjustment bolt through mounting bracket hole and into top of C mount

**Step 4.**



- Turn adjustment bolt on spring isolators 5 complete revolutions clock wise.
- Repeat for each isolator, making sure that equipment remains level.
- Continue turning each adjustment bolt 1 revolution at time until blocks are free and can be removed.
- It may be necessary to adjust some springs more than others.



**Step 5**

- Tighten lock nut on all isolators.

