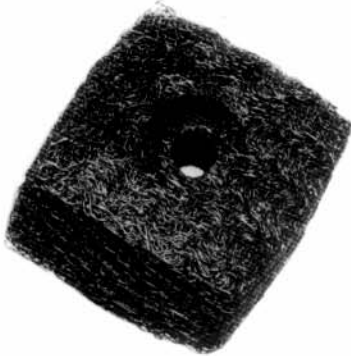


# CMT Dynamics

VA 50247H-16

VA 50247H-25



## ALL METAL RESILIENT CUSHIONS

– These mounting components consist of rectangular cushions in knitted, compressed, 18/8 stainless steel mesh.

They form compact mountings (particularly for pipe-work).

They are unaffected by oils, grease or corrosive agents, or by extremes of temperature (-150° to +400° C).

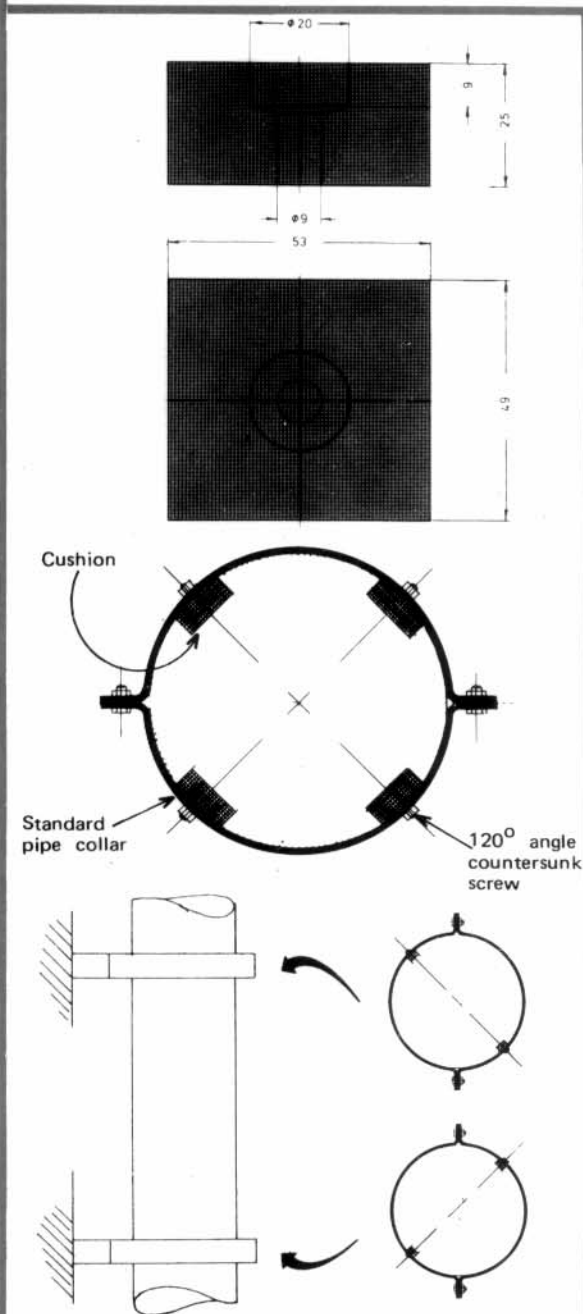
### APPLICATION

– Isolation of vibration from exhaust gas pipings, while allowing free expansion of the pipe and radial support.

### INSTALLATION

– 120° angle countersunk headed screws should be used to attach the cushions onto the inside of a standard pipe collar. The collar inside diameter should be chosen to give an installed cushion thickness of 25 mm.

– It is recommended that cushions are used in multiples of 4 depending upon the pipe diameter, see table below. Although for small pipes consecutive collars may use only two cushions each located on opposing diagonals.



Pipe diameter	Number of cushions
75 - 175	4
175 - 425	8
425 - 550	12
550 - 700	16
700 - 850	20
850 - 1000	24
1000 - 1150	32
1150 - 1300	36
1300 - 1450	40
1450 - 1600	44
1600 - 1750	48

Note: For larger and smaller diameters please consult us.