



MASON INDUSTRIES, Inc.

MERCER RUBBER Co.

350 Rabro Drive, Hauppauge, NY 11788
Mason- 631/348-0282 • Info@Mason-Ind.com
Mercer- 631/582-1524 • Info@Mercer-Rubber.com
FAX 631/348-0279

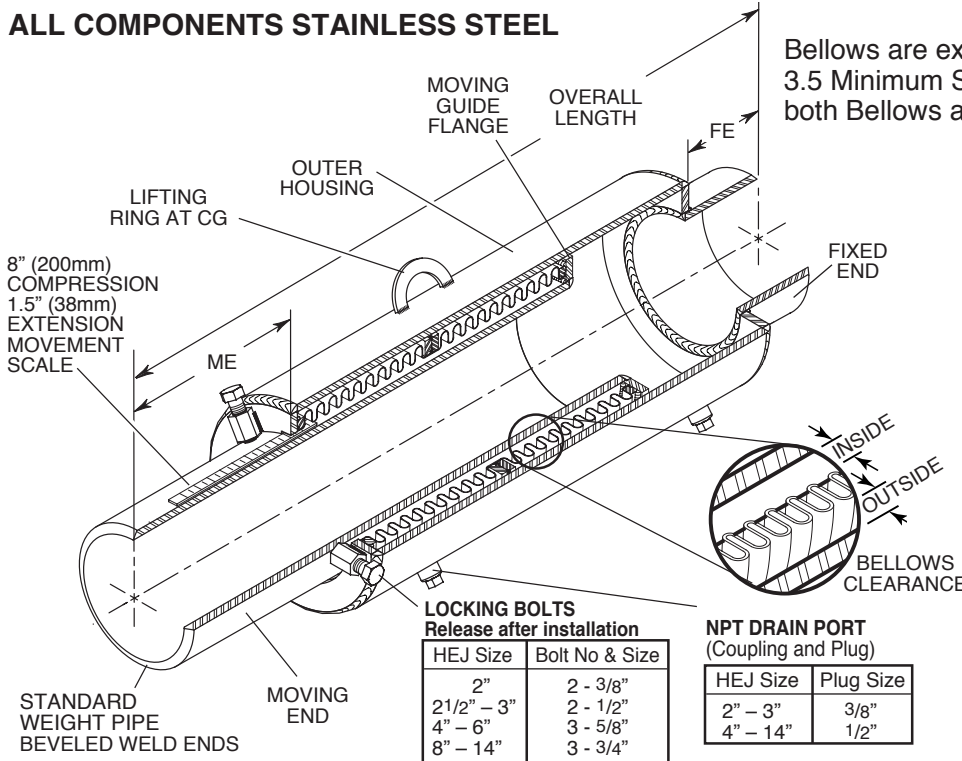


JOB NAME
CUSTOMER
CUSTOMER P.O.
MASON M.
DWG No.

HEJW8-SS-NSF

8" (200mm) Movement
SS HOUSED
EXPANSION
JOINT with
WELD ENDS

ALL COMPONENTS STAINLESS STEEL



Bellows are externally pressurized.
3.5 Minimum Safety Factor for
both Bellows and Housing.



WATER QUALITY
DRINKING WATER
SYSTEM COMPONENT
ANNEX G of ANSI / NSF 61
(4RV6)

2 PLY BELLWS
Sizes 2 to 3- 4 Sections
Sizes 4 to 6- 3 Sections
Sizes 8-14- 2 Sections
Clearance on both sides
to eliminate wear

Conforms to UL and ANSI/NSF 61
Approved Temperature Range.

Full Vacuum Rating- 30" (762mm) Hg

Drain Plugs are often removed to allow
attachment of drain hose for blow down
or drainage.

LOCKING BOLTS
Release after installation

Table with 2 columns: HEJ Size, Bolt No & Size. Rows include sizes 2", 2 1/2"-3", 4"-6", 8"-14".

NPT DRAIN PORT
(Coupling and Plug)

Table with 2 columns: HEJ Size, Plug Size. Rows include sizes 2"-3", 4"-14".

HEJW8-SS-NSF DIMENSIONS AND PRESSURE RATINGS (American & Metric Units) 8" (200mm) COMPRESSION, 1.5" (38mm) EXTENSION

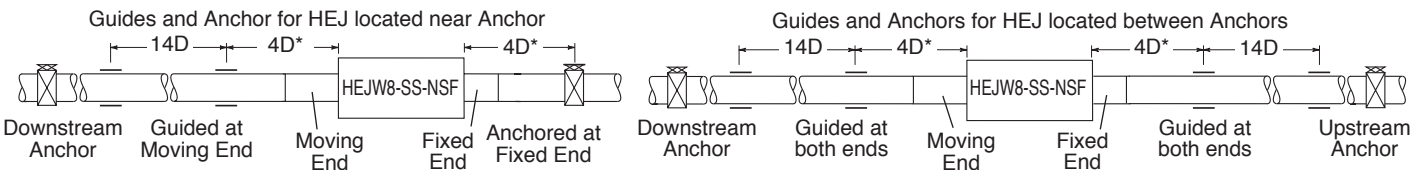
Large table with columns for Pipe Size, Overall Length, Moving End Neutral Length, Fixed End Length, Outer Housing O.D., Nominal Bellows Clearance, Spring Rate, Thrust, and Rated Pressure.

Lower Thrust Forces in proportion at lower pressures, i.e. 100 psi Force = 100/225 x published Thrust. Forces on Pipe Anchors must include Thrust Force and Spring Force. Spring Force is determined by multiplying the joint Spring Rate by its Thermal Movement. (in/mm)

HEJ's installed in piping systems must be anchored on both sides of the joint. HEJ's installed in unanchored piping must have control rods.

When using HEJW-SS-NSF products in copper or brass water systems, dielectric unions must be used on each end to prevent leakage from galvanic action.

GUIDE SPACING - Referencing Pipe Diameter "D"



*Plus an additional 5" (125mm) for Sizes 2 & 2 1/2

Table with columns: QTY, SIZE, TAG

Table with columns: QTY, SIZE, TAG