



MASON INDUSTRIES, Inc.

Manufacturers of Vibration Control Products

350 Rabro Drive
Hauppauge, NY 11788
631/348-0282
FAX 631/348-0279
Info@Mason-Ind.com
www.Mason-Ind.com

2101 W. Crescent Ave., Suite D
Anaheim, CA 92801
714/535-2727
FAX 714/535-5738
Info@MasonAnaheim.com
www.MasonAnaheim.com

**BOLT ISOLATION
WASHER BUSHINGS**

HG

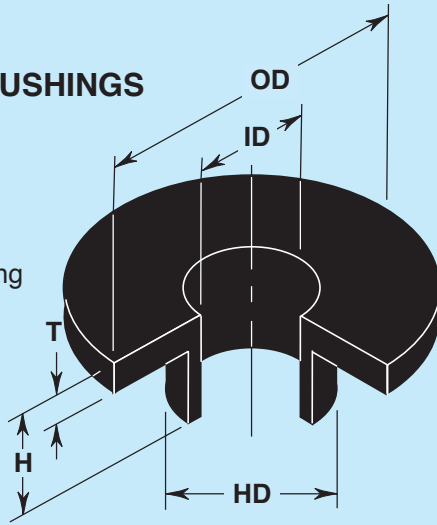
**HANGER MOUNT
ISOLATED BUSHING**

HMIB

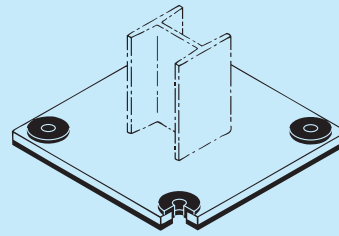
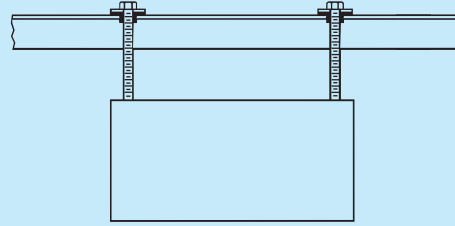
DATA SHEET DS-405-3A

HG WASHER-BUSHINGS

Material:
Bridge-Bearing
Neoprene



Acoustical Separation



**Bolt Isolator and
Seismic Cushion**

BRIDGE-BEARING NEOPRENE SPECIFICATIONS

ORIGINAL PHYSICAL PROPERTIES		TESTED FOR AGING			COMPRESSION SET			
(a) Duro-meter	(b) Tensile Strength (min)	(b) Elongat. at Break (min)	(c) OVEN AGING (70h/212°F)	(c) Tensile Strength (max)	(c) Elongat. (max)	(d) OZONE (100°C)	(d) Strain (max)	(e) 22hrs 150°F (66°C) Method B
40±5	2000 psi	140 kg/cm ²	450%	+15%	±15%	-40%	No Cracks	30%(max)
50±5	2500 psi	176 kg/cm ²	400%	+15%	±15%	-40%	No Cracks	25%(max)
60±5	2500 psi	176 kg/cm ²	350%	+15%	±15%	-40%	No Cracks	25%(max)

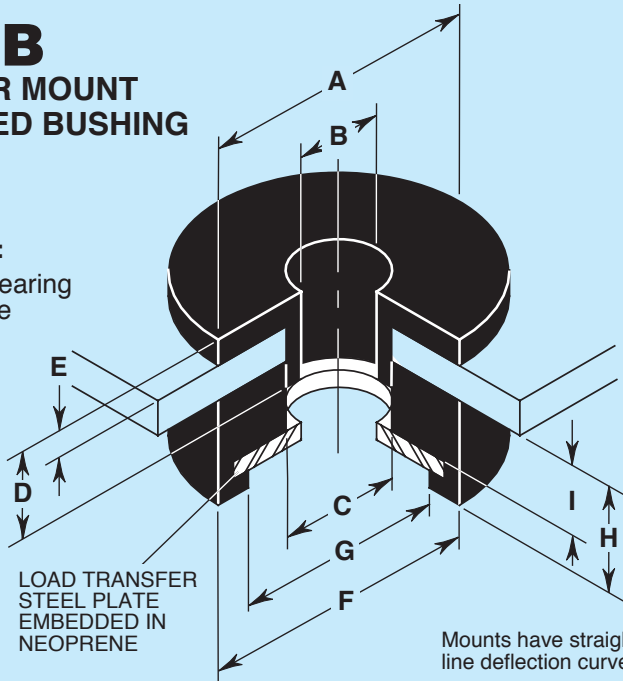
(a)ASTM D-676 (b)ASTM D-412 (c)ASTM D-573 (d)ASTM D-1149 (e)ASTM D-395

TYPE HG DIMENSIONS (inches mm)

	Bolt Dia.	ID	HD	OD	T	H
HG-25	1/4 6	1/4 6	1/2 13	1 25	1/8 3	3/8 10
HG-38	3/8 10	3/8 10	5/8 16	1 1/4 32	1/8 3	1/2 13
HG-50	1/2 13	1/2 13	3/4 19	1 5/8 41	1/8 3	1/2 13
HG-63	5/8 16	5/8 16	7/8 22	2 51	3/16 5	5/8 16
HG-75	3/4 19	3/4 19	1 25	2 1/4 57	3/16 5	5/8 16
HG-100	1 25	1 25	1 1/4 32	2 3/4 70	1/4 6	7/8 22
HG-125	1 1/4 32	1 1/4 32	1 1/2 38	3 1/4 83	1/4 6	7/8 22
HG-150	1 1/2 38	1 1/2 38	1 3/4 45	3 3/4 95	1/4 6	1 25

HMIB HANGER MOUNT ISOLATED BUSHING

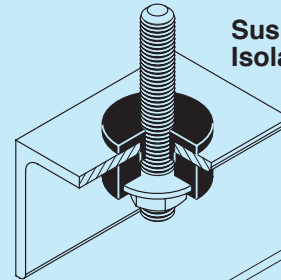
Material:
Bridge-Bearing
Neoprene



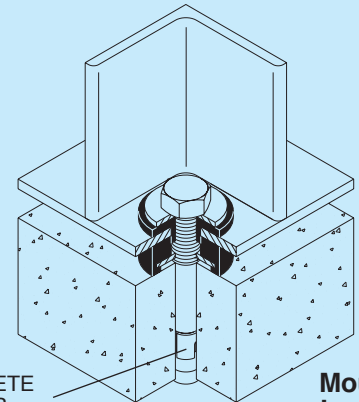
LOAD TRANSFER
STEEL PLATE
EMBEDDED IN
NEOPRENE

Mounts have straight
line deflection curves.

Suspended Isolation



**Used for
Suspended or
Floor Mounted
Equipment**



CONCRETE
ANCHOR

**Floor
Mounted
Isolation**

TYPE HMIB DIMENSIONS (inches mm)

Size	A	B	C	D	E	F	G	H	I	Rated Load (lbs) (kgs)	Rated Defl (in) (mm)
HMIB-1/4	1 25	1/4 6	1/2 13	3/8 10	1/8 3	1 1/2 38	1 25	1/2 13	3/8 10	60 27	.075 1.9
HMIB-3/8	1 1/4 32	3/8 10	5/8 16	1/2 13	1/8 3	1 3/4 45	1 1/4 32	5/8 16	1/2 13	70 32	.095 2.4
HMIB-1/2	1 5/8 41	1/2 13	3/4 19	1/2 13	1/8 3	1 3/4 45	1 1/4 32	5/8 16	1/2 13	100 45	.095 2.4
HMIB-5/8	2 51	5/8 16	7/8 22	5/8 16	3/16 5	2 51	1 1/2 38	3/4 19	1/2 13	120 54	.110 2.8



MASON INDUSTRIES, Inc.

Manufacturers of Vibration Control Products

350 Rabro Drive
Hauppauge, NY 11788
631/348-0282
FAX 631/348-0279
Info@Mason-Ind.com
www.Mason-Ind.com

2101 W. Crescent Ave., Suite D
Anaheim, CA 92801
714/535-2727
FAX 714/535-5738
Info@MasonAnaheim.com
www.MasonAnaheim.com

PANEL BOARD MOUNT

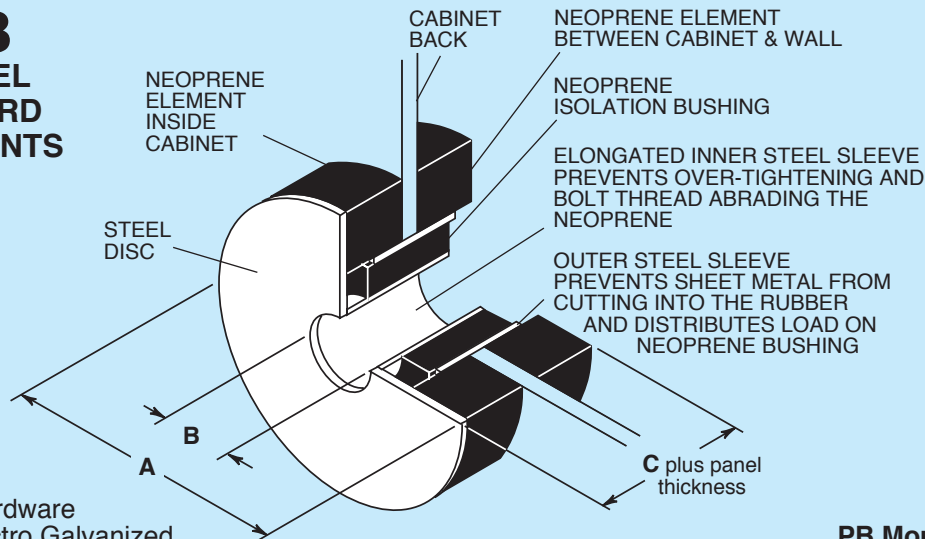
PB

NEOPRENE IMPREGNATED DUCK BUSHINGS & DUCK WASHERS

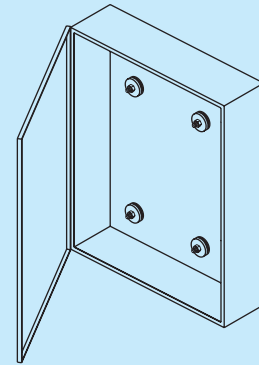
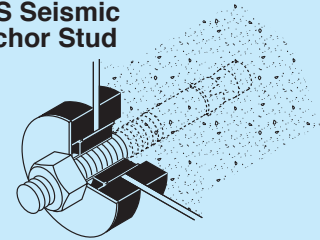
HLB & HLW

DATA SHEET DS-405-3B

PB PANEL BOARD MOUNTS



PB Mount with SAS Seismic Anchor Stud



All Hardware
is Electro Galvanized.
All Neoprene is
Bridge Bearing quality.

PB Mounts
Installed in
Cabinet

BRIDGE-BEARING NEOPRENE SPECIFICATIONS

ORIGINAL PHYSICAL PROPERTIES		TESTED FOR AGING			COMPRESSION SET (e)		
(a) Duro-meter	(b) Tensile Strength (min)	(b) Elongat. at Break (min)	(c) OVEN AGING (70H/212°F)	(d) OZONE 1 ppm in air by Vol.20% Strain 100°F(38°C)			
40±5	2000 psi	140 kg/cm ²	450%	+15% ±15%	-40%	No Cracks	30%(max)
50±5	2500 psi	176 kg/cm ²	400%	+15% ±15%	-40%	No Cracks	25%(max)
60±5	2500 psi	176 kg/cm ²	350%	+15% ±15%	-40%	No Cracks	25%(max)

TYPE PB CAPACITY and DIMENSIONS

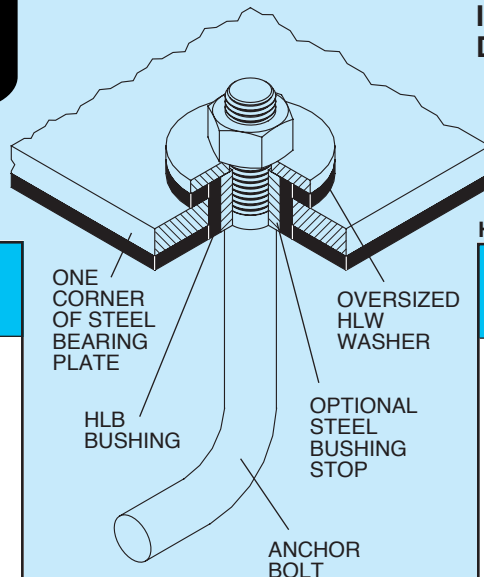
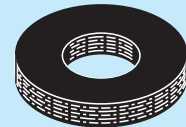
Size	Rated Capacity (lbs) (kgs)	A Dia. (in)(mm)	B Dia. (in)(mm)	C Dia. (in)(mm)	Hole Size to be Drilled in Panel Board (in)(mm)	Bolt Dia. (in)(mm)
PB-150	20 9	1 1/2 38	5/16 8	3/4 19	1 25	1/4 6
PB-175	35 16	1 3/4 44	7/16 11	7/8 22	1 1/8 29	3/8 10
PB-225	75 34	2 1/4 57	9/16 14	1 1/8 29	1 1/4 32	1/2 13

(a)ASTM D-676 (b)ASTM D-412 (c)ASTM D-573 (d)ASTM D-1149 (e)ASTM D-395

HLB NEOPRENE IMPREGNATED DUCK BUSHINGS



HLW NEOPRENE IMPREGNATED DUCK WASHERS



HLB DIMENSIONS

Type	Nominal Size & Bolt Dia. (in) (mm)	Standard Bushing O.D.* (in) (mm)
HLB-	1/4 6	1/2 13
	3/8 10	11/16 17
	1/2 13	7/8 22
	5/8 16	1 25
	3/4 19	1 3/16 30
	7/8 22	1 3/16 30
	1 25	1 7/16 37
	1 1/8 29	1 7/16 37
	1 1/4 32	1 3/4 44
	1 3/8 35	1 11/16 43
	1 1/2 38	2 51
	1 5/8 41	1 15/16 49
	1 3/4 44	2 1/16 52
	1 7/8 48	2 3/16 56
	2 51	2 1/2 64

HLW DIMENSIONS AND RATINGS

Type	Nominal Size & Bolt Dia. (in) (mm)	Washer Size ID x OD (in) (mm)	Max. Load Ratings (psi)(kg/cm ²)
HLW-	1/4 6	5/16 x 3/4	8 x 19
	3/8 10	7/16 x 1	11 x 25
	1/2 13	9/16 x 1 3/8	14 x 35
	5/8 16	1 1/16 x 1 3/4	17 x 44
	3/4 19	1 3/16 x 2	21 x 51
	7/8 22	1 5/16 x 2 1/4	24 x 57
	1 25	1 1/16 x 2 1/2	27 x 64
	1 1/8 29	1 1/4 x 2 3/4	32 x 70
	1 1/4 32	1 3/8 x 3	35 x 76
	1 3/8 35	1 1/2 x 3 1/4	38 x 83
	1 1/2 38	1 5/8 x 3 1/2	41 x 89
	1 5/8 41	1 3/4 x 3 3/4	44 x 95
	1 3/4 44	1 7/8 x 4	48 x 102
	1 7/8 48	2 x 4 1/4	51 x 108
	2 51	2 1/8 x 4 1/2	54 x 114

*Length as required.
Other I.D. and O.D. as needed.

Custom sizes and thicknesses as needed.
Washers may be square.