



MASON INDUSTRIES, Inc. Manufacturers of Vibration Control Products

350 Rabro Drive
Hauppauge, NY 11788
Tel. : 516/348-0282
Fax : 516/348-0279
info@mason-ind.com

708 N. Valley St. Suite K
Anaheim, CA 92901
Tel. : 714/535-2727
Fax : 714/535-5738
info@masonanaheim.com

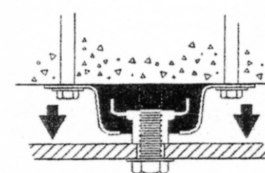
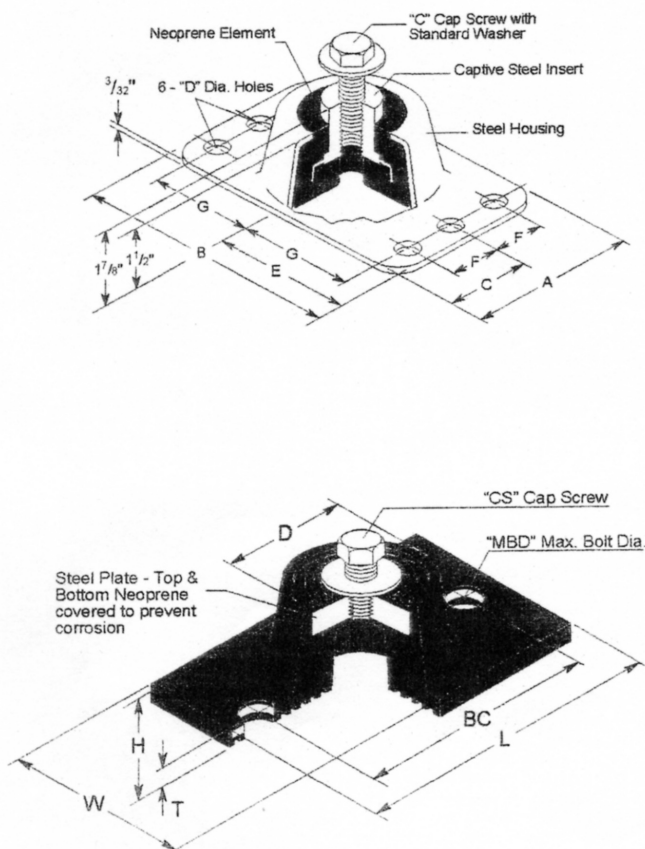
TYPE

N, ND, RAA, RBA,
RCA MOUNTS

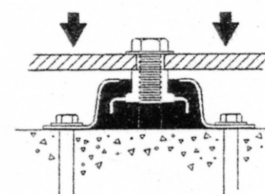
Dwg. No. A-18304-1

TO INSTALL AND ADJUST MOUNTS

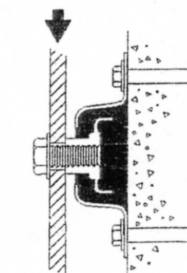
1. Supporting surfaces for mounts must be flat and leveled to within plus or minus 1/16 of an inch. Apply grout or full sized shims if needed.
2. N and ND mountings subjected to seismic or wind forces should be bolted down, otherwise it is not necessary.
3. Type RRA, RBA and RCA mounts must always be bolted to equipment and supports.
4. Install mounts under equipment bolt holes as shown on mount location drawing. Pass cap screw through hole and into mount. Turn all cap screws clockwise until equipment legs are securely fastened to mounts.



TENSION



COMPRESSION



SHEAR