

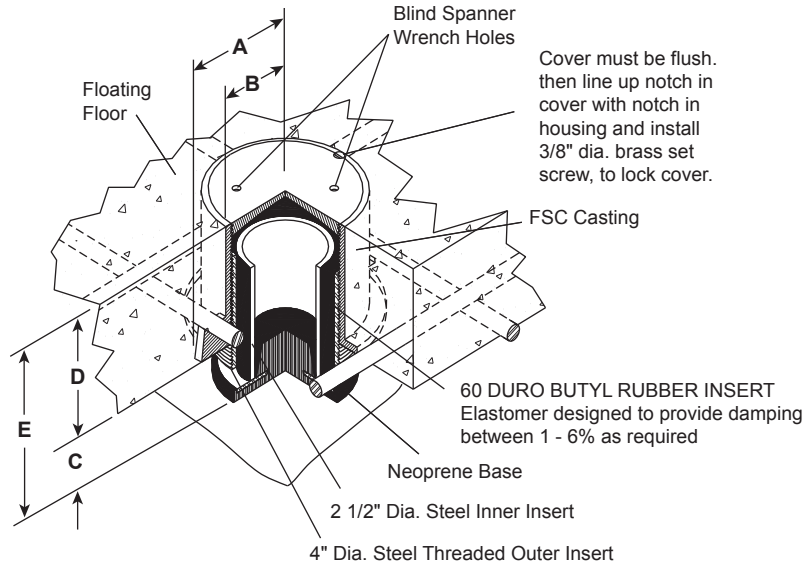


MASON INDUSTRIES, Inc.

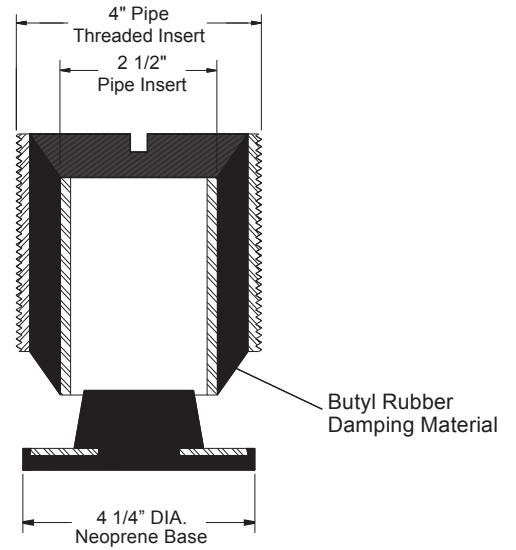
Manufacturers of Vibration Control Products
 350 Rabro Drive 2101 W. Crescent Ave., Suite D
 Hauppauge, NY 11788 Anaheim, CA 92801
 631/348-0282 714/535-2727
 FAX 631/348-0279 FAX 714/535-5738
 Info@Mason-Ind.com Info@MasonAnaheim.com
 www.Mason-Ind.com

JOB NAME _____
 CUSTOMER _____
 CUSTOMER P.O. _____
 MASON M.I. _____
 DWG. NO. _____

RISI RUBBER IN SHEAR FLOOR DAMPER INSERT



RISI Assembly Installed
 Illustrated Assembly is for 4" Thick Floating Floor



RISI Assembly Details
 Illustrated Assembly is for 4" Thick Floating Floor

TYPE RISI DIMENSIONS

Type & Size	Housing Dimensions		Air Gap	Floor Thickness	Overall Height
	A	B	C	D	E
RISI-	3 1/4" (83 mm)	2 1/2" (65 mm)	Most Common 1" or 2" (25 or 50 mm) Occasionally 3" or 4" (75 or 100 mm)	Minimum 3" (75 mm) [†] Most Common 4" (100 mm) Occasionally 6" thru 12" (150 -300 mm)	Air Gap plus Floor Thickness

MASON LAYOUT DRAWING NO. : _____

TYPE	QTY.	TAG