



MASON INDUSTRIES, Inc.

Manufacturers of Vibration Control Products

350 Rabro Drive Hauppauge, NY 11788 631/348-0282 FAX 631/348-0279 Info@Mason-Ind.com www.Mason-Ind.com

2101 W. Crescent Ave., Suite D Anaheim, CA 92801 714/535-2727 FAX 714/535-5738 Info@MasonAnaheim.com www.MasonAnaheim.com

2" (51mm) DEFLECTION FREE STANDING SPRING MOUNTS and HEIGHT SAVING BRACKETS

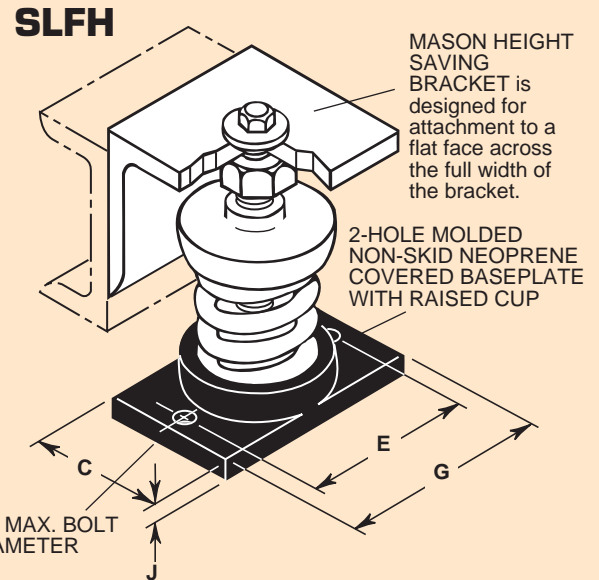
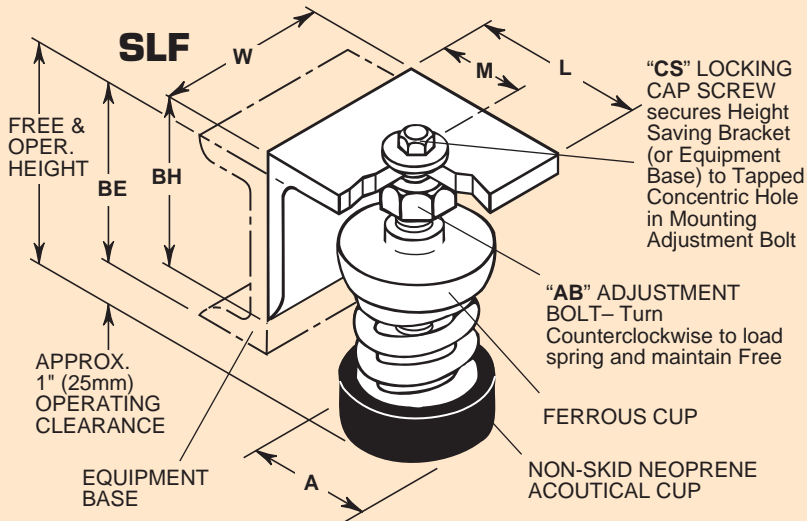
TYPE

SLF

DATA SHEET DS-208-1.1

2" (51mm) Deflection SLF SINGLE SPRING MOUNTS

Change designation to SLFH when base plate with bolt holes is required.



TYPE 2" (51mm) Deflection SLF & SLFH Ratings (in/mm)

Type	Size	Rated Capacity (lbs) (kg)	Rated Defl. [†] (in) (mm)	Spring Constant (lbs/in) (kg/mm)	Spring Color/Stripe	
SLF-	B-20	20 9	2.40 61	8 0.15	Tan	
	B-26	26 12	2.18 55	12 0.22	White/Blue	
	B-35	35 16	2.20 56	16 0.29	Purple	
	B-50	50 23	2.20 56	24 0.41	White/Red	
	B-65	65 29	2.10 53	31 0.55	Brown	
	B-85	85 39	2.10 53	40 0.74	White/Black	
	B-115	115 52	2.00 51	57 1.02	Silver	
	B-150	150 68	2.00 51	75 1.33	Orange	
	SLF-	B2-210	210 95	2.12 54	99 1.76	Silver
		B2-290	290 132	2.00 51	144 2.59	Blue
B2-450 [‡]		450 204	2.00 51	224 4.00	Tan	
B2-680 [‡]		680 308	2.00 51	340 6.04	Gray	
SLFH-		C2-125	125 57	2.50 64	50 0.89	Purple
	C2-170	170 77	2.40 61	70 1.26	Brown	
	C2-210	210 95	2.30 58	90 1.64	Red	
	C2-260	260 118	2.20 56	120 2.11	White	
	C2-330	330 150	2.00 51	165 2.94	Black	
	C2-460	460 209	2.00 51	230 4.10	Blue	
	C2-610	610 277	2.00 51	305 5.43	Green	
	C2-880 [‡]	880 399	2.00 51	440 7.82	Gray	
	C2-1210 [‡]	1210 549	2.00 51	605 10.76	Silver	
	C2-1540 [‡]	1540 699	2.00 51	770 13.71	Gray*	
	C2-1870 [‡]	1870 848	2.00 51	935 16.63	Silver*	

All springs without "‡" have additional travel to solid equal to 50% of the rated deflection. *with Red inner spring

[†]Published ratings allow minimum 25% additional travel to solid. For a full 50% specified minimum use the following ratings:

Size	Derated Capacity (lbs) (kg)	Defl. (in) (mm)	Size	Derated Capacity (lbs) (kg)	Defl. (in) (mm)
B2-450	410 186	1.83 46	C2-1210	1010 458	1.67 42
B2-680	565 256	1.67 42	C2-1540	1285 583	1.67 42
C2-880	800 363	1.82 46	C2-1870	1560 708	1.67 42

TYPE 2" (51mm) Deflection SLF & SLFH Dimensions (in/mm)

Type	Size	Free & Oper. Ht	A	C	E	G	H	J	Adjustment Bolt AB	Locking Cap Screw CS
SLF-	B	6 152	23/4 70	27/8 73	41/8 105	53/8 137	1/2 13	3/8 10	7/8x41/4 x 108	1/2x11/4 x 32
	B2	63/4 171	23/4 70	27/8 73	41/8 105	53/8 137	1/2 13	3/8 10	7/8x41/4 x 108	1/2x11/4 x 32
SLFH-	C2	63/4 171	31/8 79	33/8 86	43/4 121	61/8 156	1/2 13	3/8 10	7/8x41/4 x 108	1/2x11/4 x 32

Matching Height Saving Bracket

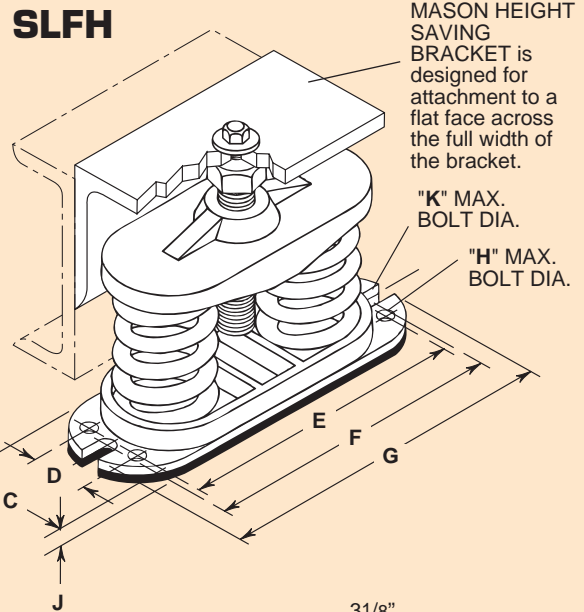
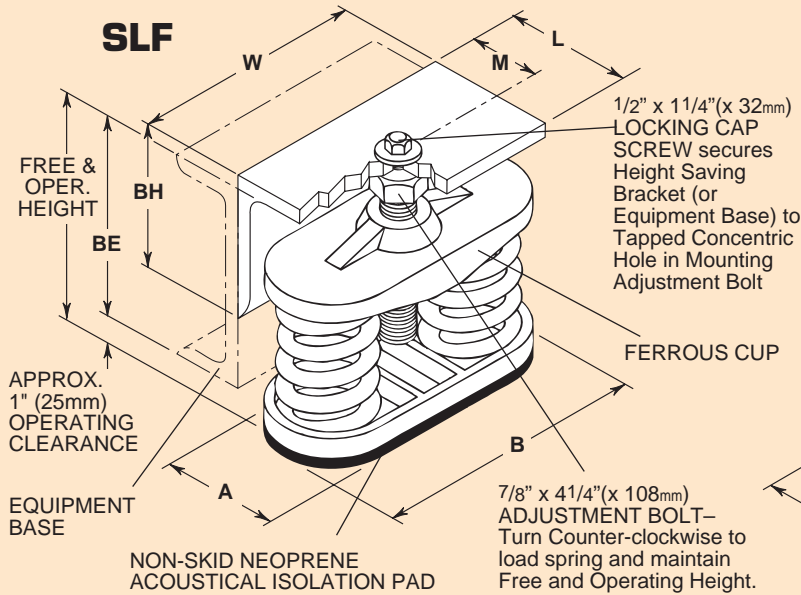
Type	Size	L (in)(mm)	M (in)(mm)	W (in)(mm)	BE (in)(mm)	BH (in)(mm)
SLF-	B	4 102	23/4 70	3 76	5 127	4 102
SLFH-	B2	4 102	23/4 70	3 76	53/4 146	4 102
	C2	4 102	23/4 70	3 76	53/4 146	4 102

SPRING CHARACTERISTICS (in/mm)

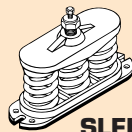
Spring Size	OD	Free Height	Ratio Kx/Ky	Ratio OD/OH
B	23/8 60	4 102	0.55-0.90	0.95-1.48
B2	23/8 60	4 1/2 114	0.55-0.90	0.95-1.48
C2	27/8 73	5 127	0.63-0.85	0.96-1.15

2"(51mm) Deflection SLF MULTIPLE SPRING MOUNTS

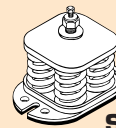
Change designation to SLFH when base plate with bolt holes is required.



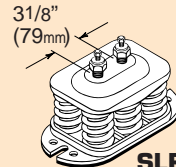
Multiple spring mounts have C2 size springs. SLF-2, SLF-3, SLF-4, & SLF-6 have 2, 3, 4, & 6 springs respectively. Illustrations show SLFH versions.



SLF-3



SLFH-4



SLFH-6

TYPE 2"(51mm) Deflection SLF & SLFH Ratings (in/mm)

Type	Size	Rated Capacity (lbs) (kg)	Rated Defl. [†] (in) (mm)	Spring Constant (lbs/in) (kg/mm)	Spring Color/Stripe
SLF-	2-C2-340	340 154	2.40 61	140 2.52	Brown
	2-C2-420	420 191	2.30 58	180 3.30	Red
	2-C2-520	520 236	2.20 56	240 4.21	White
	2-C2-660	660 299	2.00 51	330 5.86	Black
	2-C2-920	920 417	2.00 51	460 8.18	Blue
	SLFH-	2-C2-1220	1220 553	2.00 51	610 10.84
2-C2-1760 [†]		1760 798	2.00 51	880 15.65	Gray
2-C2-2420 [†]		2420 1098	2.00 51	1210 21.53	Silver
2-C2-3080 [†]		3080 1397	2.00 51	1540 27.39	Gray*
2-C2-3740 [†]		3740 1696	2.00 51	1870 33.25	Silver*
3-C2-2640 [†]		2640 1197	2.00 51	1320 23.47	Gray
3-C2-3630 [†]		3630 1647	2.00 51	1815 32.29	Silver
3-C2-4620 [†]		4620 2096	2.00 51	2310 41.10	Gray*
3-C2-5610 [†]		5610 2545	2.00 51	2805 49.90	Silver*
4-C2-4840 [†]		4840 2195	2.00 51	2420 43.04	Silver
4-C2-6160 [†]	6160 2794	2.00 51	3080 54.78	Gray*	
4-C2-7480 [†]	7480 3393	2.00 51	3740 66.53	Silver*	
6-C2-7260 [†]	7260 3293	2.00 51	3630 64.57	Silver	
6-C2-9240 [†]	9240 4191	2.00 51	4620 82.18	Gray*	
6-C2-11220 [†]	11220 5089	2.00 51	5610 99.78	Silver*	

TYPE 2"(51mm) Deflection SLF & SLFH Dimensions (in/mm)

Type	Size	Free & Oper Ht	A	B	C	D	E	F	G	Hole Max Bolt Diam	H	Slot Max Bolt Diam	J	K
SLF-	2	63/4 171	31/4 83	73/4 197	31/4 83	13/4 44	81/4 210	81/2 216	10 254	5/16 8	1/2 13	3/8 10		
	3	63/4 171	33/8 86	91/2 241	33/8 86	13/4 44	10 254	101/4 260	113/4 298	5/16 8	1/2 13	3/8 10		
SLFH-	4	63/4 171	61/4 159	61/4 159	61/4 159	21/4 57	71/2 191	71/2 191	93/8 229	1/2 13	1/2 13	1/2 13		
	6	63/4 171	63/8 162	91/2 241	63/8 162	21/4 57	103/4 273	103/4 273	125/8 321	1/2 13	1/2 13	1/2 13		

Matching Height Saving Bracket

BH- Bracket Height
BE- Bracket Elevation

Type	Size	L (in)(mm)	M (in)(mm)	W (in)(mm)	BE (in)(mm)	BH (in)(mm)
SLF-	2	4 102	21/2 64	6 152	53/4 146	4 102
	3	4 102	21/2 64	7 178	53/4 146	4 102
SLFH-	4	6 152	4 102	81/2 216	53/4 146	6 152
	6	7 178	5 127	113/4 298	53/4 146	7 178

All springs without "+" have additional travel *with Red inner spring to solid equal to 50% of the rated deflection.

[†]Published ratings allow minimum 25% additional travel to solid. For a full 50% specified minimum use the following ratings:

Size	Derated Capacity (lbs) (kg)	Defl. (in)(mm)	Size	Derated Capacity (lbs) (kg)	Defl. (in)(mm)	Size	Derated Capacity (lbs) (kg)	Defl. (in)(mm)	Size	Derated Capacity (lbs) (kg)	Defl. (in)(mm)
2-C2-1760	1600 726	1.83 46	3-C2-2640	2400 1089	1.67 42	4-C2-4840	4040 1833	1.67 42	6-C2-7260	6060 2749	1.67 42
2-C2-2420	2020 916	1.67 42	3-C2-3630	3030 1374	1.67 42	4-C2-6160	5145 2334	1.67 42	6-C2-9240	7715 3499	1.67 42
2-C2-3080	2570 1166	1.67 42	3-C2-4620	3860 1751	1.67 42	4-C2-7480	6245 2833	1.67 42	6-C2-11220	9370 4250	1.67 42
2-C2-3740	3120 1415	1.67 42	3-C2-5610	4685 2125	1.67 42						