



SHIFTEC

VA50247-16

VA50247-25

DESCRIPTION

These mounting components consist of rectangular cushions in knitted, compressed, stainless steel mesh. They are unaffected by oils, grease, corrosive agents, or by extremes of temperature (-70°C to +425°C).

APPLICATIONS

Vibration isolation for exhaust gas piping, while allowing free expansion of the pipe and radial support. Used in marine and industrial applications.

SELECTION

The cushions are available in two thicknesses: 16 mm and 25 mm. We recommend the use of cushions VA50247-16 (16 mm thick) on pipework smaller than 270 mm diameter and VA50247-25 (25 mm thick) on pipework larger than 270 mm.

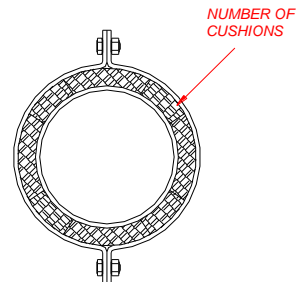
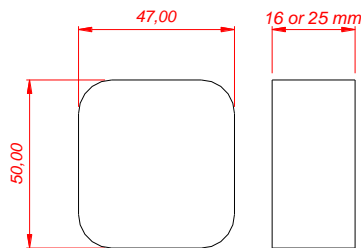
EXAMPLE OF DESIGNATION

For pipework with 140 mm external diameter: use 9 off Cushions VA50247-16
For pipework with 1000 mm external diameter: use 32 off Cushions VA50247-25

INSTALLATION

We recommend a mounting scheme similar to that shown below, two half rings in which the cushions are located end to end.

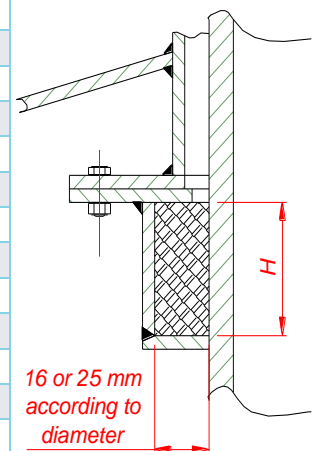
Countersunk screws should be used to attach the cushions onto the inside of a standard pipe collar.



Note: Outside dimensions are for reference only. The 50 x 47 mm is the tool size and the cushion is larger than this. Please contact Defence Dynamics if precise details are required.

| Pipe Diameter, mm | Height H | No. |
|-------------------|----------|-----|
| 75 - 85 | 50 | 5 |
| 80 - 90 | 47 | 5 |
| 90 - 100 | 50 | 6 |
| 95 - 105 | 47 | 6 |
| 105 - 120 | 50 | 7 |
| 120 - 135 | 50 | 8 |
| 135 - 150 | 50 | 9 |
| 150 - 170 | 50 | 10 |
| 165 - 185 | 50 | 11 |
| 180 - 200 | 50 | 12 |
| 195 - 220 | 50 | 13 |
| 210 - 240 | 50 | 14 |
| 240 - 270 | 47 | 15 |
| 270 - 305 | 47 | 17 |
| 300 - 340 | 50 | 20 |

| Pipe Diameter, mm | Height H | No. |
|-------------------|----------|-----|
| 335 - 380 | 47 | 21 |
| 360 - 410 | 50 | 24 |
| 400 - 450 | 50 | 27 |
| 445 - 500 | 47 | 28 |
| 500 - 560 | 47 | 31 |
| 560 - 630 | 47 | 35 |
| 620 - 700 | 47 | 39 |
| 700 - 790 | 47 | 44 |
| 780 - 880 | 47 | 49 |
| 875 - 985 | 47 | 55 |
| 975 - 1100 | 47 | 61 |
| 1100 - 1240 | 47 | 69 |
| 1230 - 1385 | 47 | 77 |
| 1370 - 1550 | 47 | 86 |
| 1530 - 1725 | 47 | 96 |



DEFENCE DYNAMICS

shiftec.com

Neachells Lane, Willenhall, West Midlands, WV13 3SN, United Kingdom

T: +44 (0) 1902 308 000

E: sales.dd@shiftec.com

MEMBER OF



While care has been taken to ensure that the information contained in this publication is accurate, we do not accept responsibility or liability for information which is found to be misleading. Specifications can change without notice.