



MASON INDUSTRIES, Inc.

MERCER RUBBER Co.

350 Rabro Drive, Hauppauge, NY 11788
 Mason- 631/348-0282 • Info@Mason-Ind.com
 Mercer- 631/582-1524 • Info@Mercer-Rubber.com
 FAX 631/348-0279

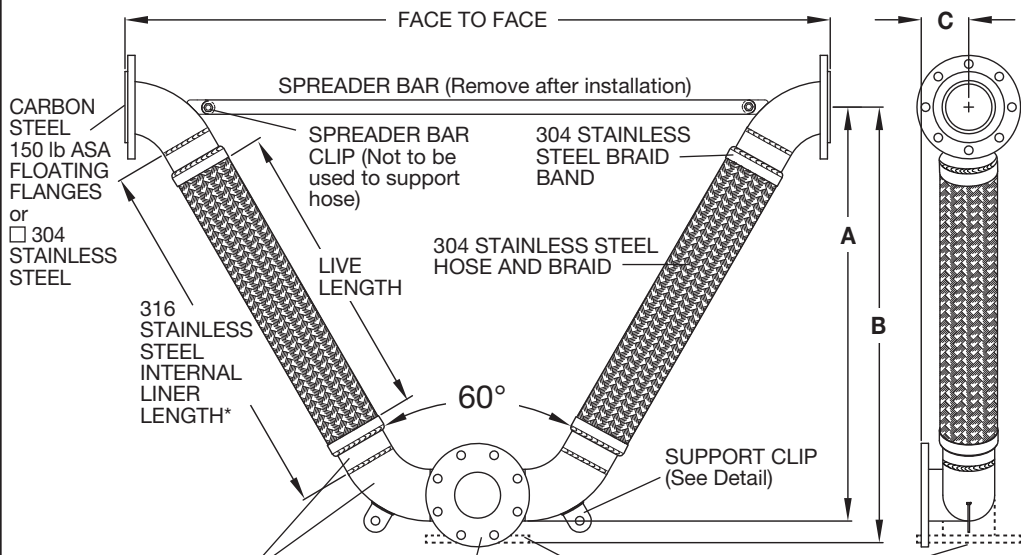


JOB NAME _____
 CUSTOMER _____
 CUSTOMER P.O. _____
 MASON M. _____
 DWG No. _____

VFLC

60° Vee SS BRAIDED HOSE with CARBON STEEL FLOATING FLANGES and CLEAN OUT

Full Vacuum Rating— 30" (762mm) Hg



CARBON STEEL 150 lb ASA FLOATING FLANGES or 304 STAINLESS STEEL

316 STAINLESS STEEL INTERNAL LINER LENGTH*

SPREADER BAR CLIP (Not to be used to support hose)

304 STAINLESS STEEL HOSE AND BRAID

SPREADER BAR (Remove after installation)

304 STAINLESS STEEL BRAID BAND

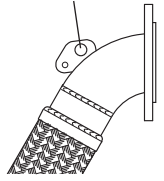
SUPPORT CLIP (See Detail)

CARBON STEEL SCHEDULE 40 PIPE and ELBOWS (4) or 304 STAINLESS SCHEDULE 10 or SCHEDULE 40

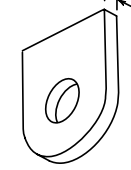
CLEAN OUT 2" to 3"— Cleanout Size is Pipe Size
 4" & Larger— Cleanout Size is 4"

CARBON STEEL SCHEDULE 40 or 304 STAINLESS STEEL SCHEDULE 10 or SCHEDULE 40

Hole for chain hoist when rigging (Sizes 5" — 12")



CLIP THICKNESS



SUPPORT CLIP DETAIL

PLATE FLANGE THICKNESS

Pipe Size		Flange Thickness	
(in)	(mm)	(in)	(mm)
2 thru 4	50 thru 100	5/8	16
5 thru 6	125 thru 150	3/4	19
8 thru 12	200 thru 300	1	25

RATED PRESSURES @

ELEVATED TEMPERATURES (psi) (kg/cm²)

Hose Size (in) (mm)	250°F (121°C)		350°F (176°C)		450°F (232°C)	
	Factor 0.92	Factor 0.86	Factor 0.86	Factor 0.81	Factor 0.81	Factor 0.76
2 50	330	23	310	21	290	20
2 1/2 65	270	19	250	17	235	16
3 80	260	18	240	16	230	16
4 100	210	15	200	14	190	13
5 125	190	13	180	12	170	11
6 150	190	13	180	12	170	11
8 200	170	11	160	11	150	10
10 250	160	11	150	10	140	9
12 300	160	11	150	10	140	9

SUPPORT CLIP

Pipe Size (in) (mm)	SUPPORT CLIP	
	Hole Diameter (in) (mm)	Thickness (in) (mm)
2 50	5/8 16	1/8 3
2 1/2 65	5/8 16	1/8 3
3 80	3/4 16	1/8 3
4 100	3/4 19	1/8 3
5 125	3/4 19	1/4 6
6 150	7/8 22	3/8 9
8 200	7/8 22	1/2 13
10 250	1 25	1/2 13
12 300	1 25	1/2 13

RATED MOVEMENTS

±4" (100mm) All Directional Seismic Movement
 ±6" (150mm) Guided Thermal Movement Only

Service Conditions include:
 • Storm and Sewer Systems
 • Process Waste Systems

*316 Stainless Steel Liner is used to reduce sediment build-up inside the flexible hose.

VFLC DIMENSIONS AND PRESSURE RATINGS (American Units)

Size	Face to Face (in)	Live Length (in)	Internal Liner Length (in)	Corrugations per foot	Dimensions			Rated Pressure @70°F (psi)
					A (in)	B (in)	C (in)	
2	41	20	24	58	26	27 1/2	23/8	360
2 1/2	46 3/8	22	26	48	28 5/8	30 1/4	3 1/8	290
3	53	24	28	46	32 3/8	34 1/8	3 1/2	280
4	61 1/4	26	30	32	36	38	4 1/4	230
5	72	30	34	29	41 1/2	43 3/8	4 3/4	200
6	81 5/8	33	37	25	46	48	5 1/4	200
8	97 7/8	36	40	23	52 3/4	54 5/8	6 1/4	180
10	117 1/4	42	46	21	62	64	7 3/8	170
12	135 5/8	48	52	20	70 1/4	72 1/2	8 5/8	170

VFLC DIMENSIONS AND PRESSURE RATINGS (Metric Units)

Size	Face to Face (mm)	Live Length (mm)	Internal Liner Length (mm)	Corrugations per meter	Dimensions			Rated Pressure @21°C (kg/cm ²)
					A (mm)	B (mm)	C (mm)	
50	1041	508	610	190	660	699	60	25
65	1178	559	660	157	727	768	79	20
80	1346	610	711	151	822	867	89	19
100	1556	660	762	105	914	965	108	16
125	1829	762	864	95	1054	1102	121	14
150	2073	838	940	82	1168	1219	133	14
200	2486	914	1016	75	1340	1387	159	12
250	2978	1067	1168	69	1575	1626	187	12
300	3445	1219	1321	66	1784	1842	219	12

Face to Face Tolerance: minus 1% plus 3%. Minimum Burst is four times the Rated Pressure. Safety factor of 4. Size 12" (300mm) has double braid.

QTY	SIZE	TAG

QTY	SIZE	TAG