



MASON INDUSTRIES, Inc.

MERCER RUBBER Co.

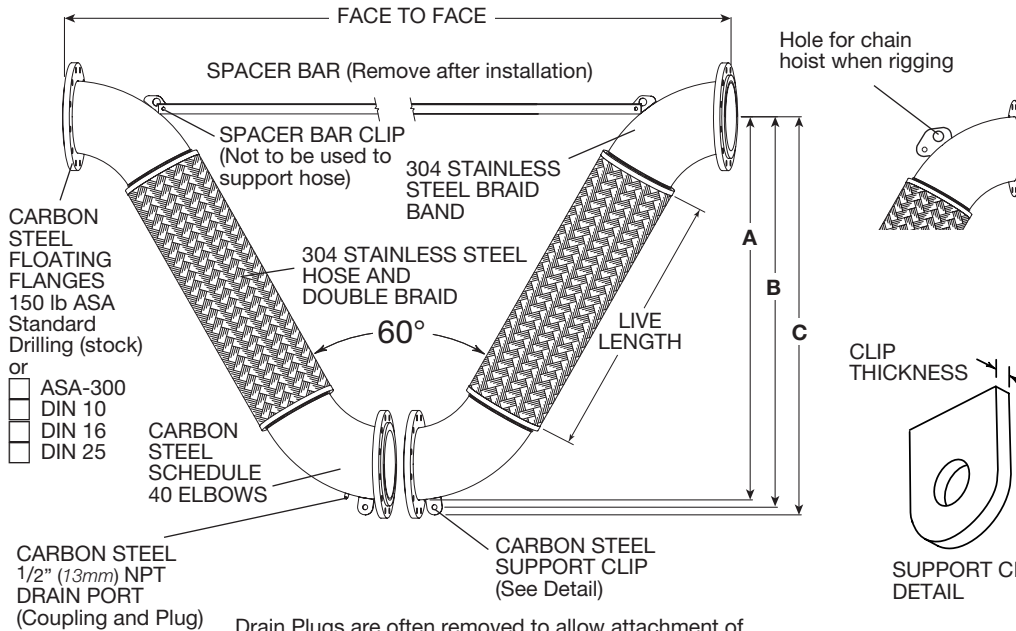
350 Rabro Drive, Hauppauge, NY 11788
 Mason- 631/348-0282 • Info@Mason-Ind.com
 Mercer- 631/582-1524 • Info@Mercer-Rubber.com
 FAX 631/348-0279



JOB NAME _____
 CUSTOMER _____
 CUSTOMER P.O. _____
 MASON M. _____
 DWG No. _____

VFLS

**SPLIT 60Vee
 SS DOUBLE
 BRAIDED HOSE with
 CARBON STEEL
 FLOATING FLANGES**



CARBON STEEL PLATE FLANGES

Pipe Size (in) (mm)	Flange Thickness (in) (mm)
14 350	1 25
16 400	1 25
18 450	1 1/4 19
20 500	1 1/2 25
24 600	1 1/2 25

CARBON STEEL SUPPORT CLIP

Pipe Size (in) (mm)	SUPPORT CLIP Hole Diameter (in) (mm)	Thickness (in) (mm)
14 350	1 25	3/4 19
16 400	1 25	3/4 19
18 450	1 25	3/4 19
20 500	1 3/8 35	1 25
24 600	1 3/4 35	1 25

Drain Plugs are often removed to allow attachment of drain hose or steam trap for blow down or drainage.

Full Vacuum Rating- 30" (762mm) Hg

RATED PRESSURES @

Hose Size (in) (mm)	ELEVATED TEMPERATURES (psi) (kg/cm ²)		
	250°F 121°C Factor 0.92	350°F 176°C Factor 0.86	450°F 232°C Factor 0.81
14 350	160 11	150 10	140 9
16 400	160 11	150 10	140 9
18 450	160 11	150 10	140 9
20 500	140 9	130 9	120 8
24 600	140 9	130 9	120 8

SATURATED STEAM

Size (in) (mm)	RECOMMENDED PRESSURE LIMITS	
	Max Gauge (psi) (kg/cm ²)	Temp Reference (F) (°C)
14 350	30 2	273 134
16 400	15 1	250 121
18 450	15 1	250 121
20 500	15 1	250 121
24 600	15 1	250 121

Our steam service ratings are very low in the interest of safety although our 70°F (21°C) pressure ratings are as high or higher than our competitors. All locations where failure could lead to personal injury or suffocation must be avoided. In dangerous locations we suggest housed expansion joints, solid loops, ball joints, packed devices etc. rather than thin walled flexible products regardless of manufacturer.

Consult factory with full location description as well as service conditions for higher pressure or temperature applications.

304 SS can be used up to 850°F (454°C) in applications such as engine exhaust.

RATED MOVEMENTS

±4" (102mm) All Directional Seismic Movement
±6" (152mm) Guided Thermal Movement Only

VFLS DIMENSIONS AND PRESSURE RATINGS (American Units)

Type	Pipe Size & Face to Face (in)	Live Length (in)	Corrugations per foot	A (in)	B (in)	C (in)	Rated Pressure @70°F (psi)
VFLS	14 X 1271/4	52	18	743/4	761/2	781/4	170
VFLS	16 X 1473/4	56	16	821/4	84	86	170
VFLS	18 X 164	68	15	961/2	981/2	100	170
VFLS	20 X 1761/2	70	14	1023/8	1043/4	1063/8	150
VFLS	24 X 1991/4	72	13	112	1141/4	116	150

VFLS DIMENSIONS AND PRESSURE RATINGS (Metric Units)

Type	Pipe Size & Face to Face (mm)	Live Length (mm)	Corrugations per meter	A (mm)	B (mm)	C (mm)	Rated Pressure @21°C (kg/cm ²)
VFLS	350 X 3232	1320	59	1898	1943	1988	12
VFLS	400 X 3753	1422	52	2089	2134	2184	12
VFLS	450 X 4166	1727	49	2451	2502	2540	12
VFLS	500 X 4483	1778	46	2600	2660	2702	11
VFLS	600 X 5061	1829	43	2845	2902	2946	11

Face to Face Tolerance: minus 1% plus 3%. Minimum Burst is four times the Rated Pressure. Safety factor of 4. Sizes 20" and 24" are double ribbon braided.

QTY	SIZE	TAG

QTY	SIZE	TAG