



MASON INDUSTRIES, Inc.

MERCER RUBBER Co.

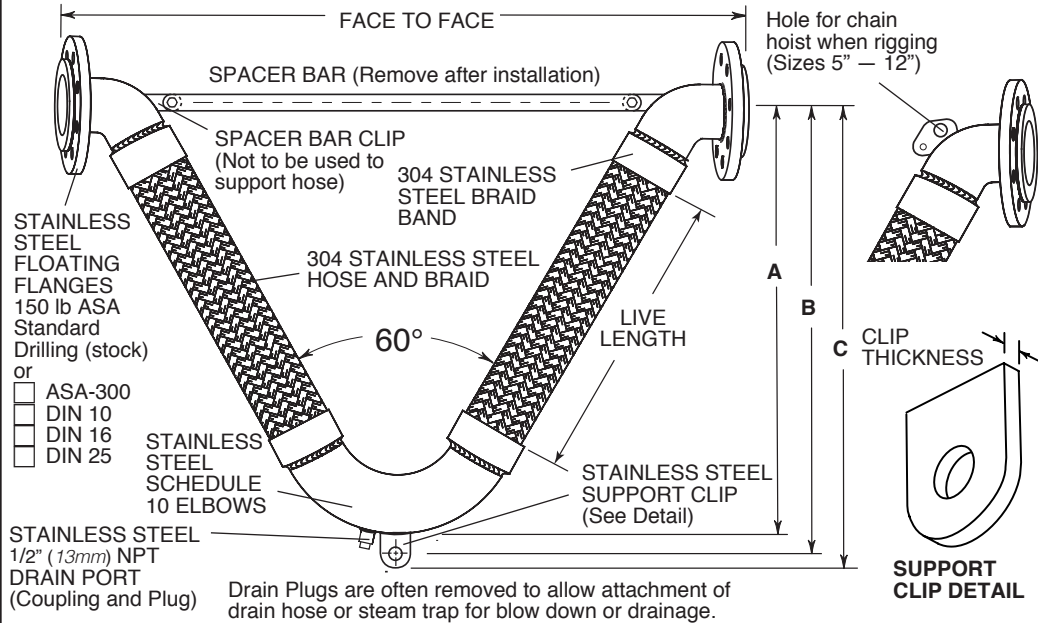
350 Rabro Drive, Hauppauge, NY 11788  
 Mason- 631/348-0282 • Info@Mason-Ind.com  
 Mercer- 631/582-1524 • Info@Mercer-Rubber.com  
 FAX 631/348-0279



JOB NAME \_\_\_\_\_  
 CUSTOMER \_\_\_\_\_  
 CUSTOMER P.O. \_\_\_\_\_  
 MASON M. \_\_\_\_\_  
 DWG No. \_\_\_\_\_

**VFLSS**

60° Vee SS BRAIDED HOSE with STAINLESS STEEL FLOATING FLANGES



**STAINLESS STEEL PLATE FLANGES**

Pipe Size (in)	Pipe Size (mm)	Flange Thickness (in)	Flange Thickness (mm)
2 thru 4	50 thru 100	5/8	16
5 thru 6	125 thru 150	3/4	19
8 thru 12	200 thru 300	1	25

**STAINLESS STEEL SUPPORT CLIP**

Pipe Size (in)	Pipe Size (mm)	SUPPORT CLIP Hole Diameter (in)	SUPPORT CLIP Hole Diameter (mm)	Thickness (in)	Thickness (mm)
2	50	5/8	16	1/8	3
2 1/2	65	5/8	16	1/8	3
3	80	3/4	16	1/8	3
4	100	3/4	19	1/8	3
5	125	3/4	19	1/4	6
6	150	7/8	22	3/8	9
8	200	7/8	22	1/2	13
10	250	1	25	1/2	13
12	300	1	25	1/2	13

**RATED PRESSURES @ ELEVATED TEMPERATURES (psi) (kg/cm<sup>2</sup>)**

Hose Size (in) (mm)	250°F (121°C)		350°F (176°C)		450°F (232°C)	
	Factor 0.92	Factor 0.86	Factor 0.86	Factor 0.81	Factor 0.81	Factor 0.76
2 50	330	23	310	21	290	20
2 1/2 65	270	19	250	17	235	16
3 80	260	18	240	16	230	16
4 100	210	15	200	14	190	13
5 125	190	13	180	12	170	11
6 150	190	13	180	12	170	11
8 200	190	13	180	12	170	11
10 250	160	11	150	10	140	9
12 300	160	11	150	10	140	9

**SATURATED STEAM RECOMMENDED PRESSURE LIMITS**

Size (in) (mm)	Max Gauge (psi) (kg/cm <sup>2</sup> )	Temp Reference (F) (°C)
2 50	150 11	362 183
2 1/2 65	125 9	355 179
3 80	125 9	355 179
4 100	125 9	355 179
5 125	100 7	337 169
6 150	100 7	337 169
8 200	75 5	320 160
10 250	60 4	307 153
12 300	60 4	307 153

Full Vacuum Rating- 30" (762mm) Hg

Our steam service ratings are very low in the interest of safety although our 70°F (21°C) pressure ratings are as high or higher than our competitors. All locations where failure could lead to personal injury or suffocation must be avoided. In dangerous locations we suggest housed expansion joints, solid loops, ball joints, packed devices etc. rather than thin walled flexible products regardless of manufacturer.

Consult factory with full location description as well as service conditions for higher pressure or temperature applications.

304 SS can be used up to 850°F (454°C) in applications such as engine exhaust.

When using VFLSS products in copper or brass water or steam systems, dielectric flanges must be used on each end to prevent leakage from galvanic action.

**RATED MOVEMENTS**

±4" (100mm) All Directional Seismic Movement  
 ±6" (150mm) Guided Thermal Movement Only

**VFLSS DIMENSIONS AND PRESSURE RATINGS (American Units)**

Type	Pipe Size & Face to Face (in)	Live Length (in)	Corrugations per foot	A (in)	B (in)	C (in)	Rated Pressure @70°F (psi)
VFLSS	2 X 33	20	58	23 1/4	24 1/4	25	360
VFLSS	2 1/2 X 37	22	48	26	27	27 3/4	290
VFLSS	3 X 42	24	46	28 7/8	30 1/8	31 1/8	280
VFLSS	4 X 49	26	32	32 1/2	33 3/4	34 3/4	225
VFLSS	5 X 58	30	29	38	39 1/2	40 1/2	200
VFLSS	6 X 66	33	25	42 5/8	44 1/8	45 3/8	200
VFLSS	8 X 80	36	23	49 1/4	50 3/4	52	200
VFLSS	10 X 96	42	21	58 1/2	60 1/4	61 3/4	170
VFLSS	12 X 112	48	20	67 3/4	69 1/2	71	170

**VFLSS DIMENSIONS AND PRESSURE RATINGS (Metric Units)**

Type	Pipe Size & Face to Face (mm)	Live Length (mm)	Corrugations per meter	A (mm)	B (mm)	C (mm)	Rated Pressure @21°C (kg/cm <sup>2</sup> )
VFLSS	50 X 838	508	190	591	616	635	25
VFLSS	65 X 940	559	157	660	686	705	20
VFLSS	80 X 1067	610	151	733	765	791	19
VFLSS	100 X 1245	660	105	826	857	883	16
VFLSS	125 X 1473	762	95	965	1003	1029	14
VFLSS	150 X 1676	838	82	1083	1121	1153	14
VFLSS	200 X 2032	914	75	1251	1289	1321	14
VFLSS	250 X 2438	1067	69	1486	1530	1568	12
VFLSS	300 X 2849	1219	66	1721	1765	1803	12

Face to Face Tolerance: minus 1% plus 3%. Minimum Burst is four times the Rated Pressure. Safety factor of 4. Size 12" (300mm) has double braid.

QTY	SIZE	TAG

QTY	SIZE	TAG