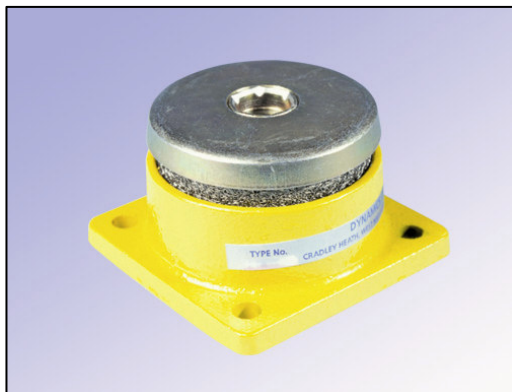


W302 Series



APPLICATIONS

Primarily developed for heavy-duty applications. It is capable of withstanding compression loads as high as ten times the static load and is used for isolating marine fans, mobile engines, generators and general machine shop plant, such as lathes, milling machines, saws etc. There is no alteration in characteristics between -70 °C and +175 °C.

DESCRIPTION

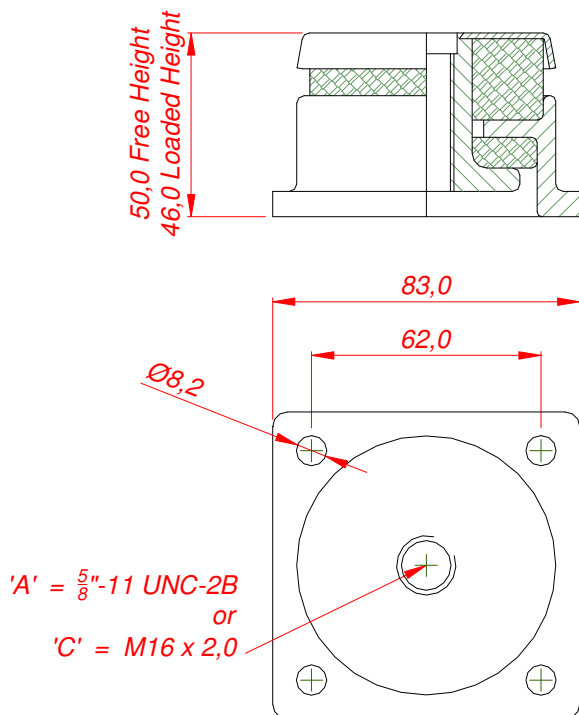
The housing is a machined casting, the centre and cup washer are zinc plated and gold passivated mild steel. The load carrying resilient elements are formed knitted stainless steel cushions.

*A locking facility is provided for the removal of rusted fixing bolts and ease of assembly.

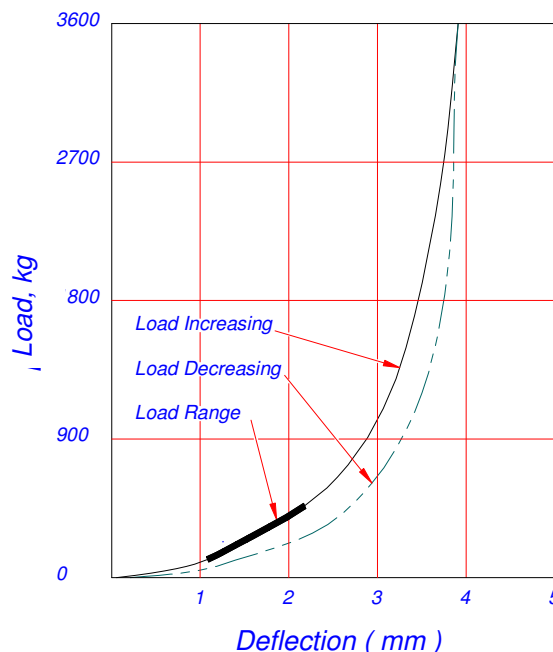
The drilled base flange allows for floor fixing.

DYNAMIC CHARACTERISTICS

Natural Frequency = 14 to 22 Hz



Typical Performance Curve for W302-2



Part Number	Static Load kg
W302-1	35 - 180
W302-2	140 - 360
W302-3	275 - 725

Ordering example:

W302-1C load range 35-180 kg
Fixing type 'C' i.e. M16

CAPARO
DYNAMICS
VIBRATION SHOCK AND NOISE CONTROL



INVESTOR IN PEOPLE

A Division of
CAPARO
ENGINEERING
Limited

