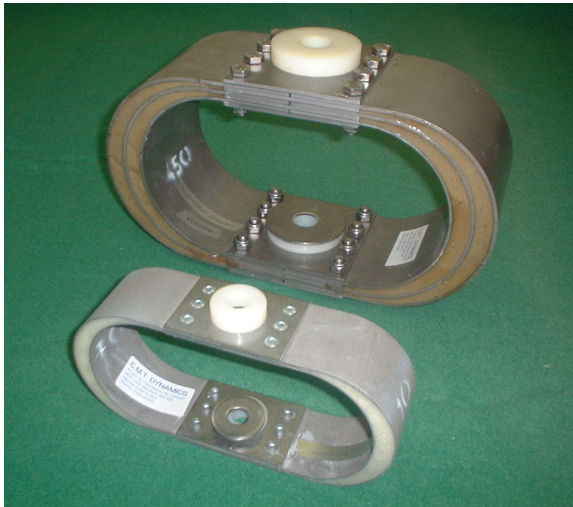


Type 'X'



Naval Type 'X' Mount

DESCRIPTION

The basic design employs two or more high tensile stainless steel 'U' formed leaves, situated at each end forming an elliptical shape when joined together in the centre portion with face plates. The spaces between the 'U' formed leaves are filled with a specially developed epoxy resin compound, post cured to a stable condition.

APPLICATION

Approved by the MOD for Naval use these mounts were designed and developed primarily to protect delicate electronic equipment against shock. They are also used in submarines for suspension and elimination of noise in confined spaces. In addition, they are used in engineering applications throughout industry, giving protection against starting torques, overload surges etc.. Low permitted deflection in every direction with a high-energy loss within the mountings.

Special care must be taken to ensure that the required clearances are provided around the equipment. This is necessary to reduce the risk of damage to motion of the mounts during shock.

INSTALLATION

The table overleaf gives dimensional details of the range of 'X' mounts. There are eight standard sizes with nominal loads ranging from 10 to 450 kg. These sizes fall into three groups dimensionally i.e. 10 20; 45 70 110; 180 320 450.

Groups one and two are 51 mm wide with group three 102 mm wide.

(See the tables for the special range sizes)



A Division of **CAPRO** Engineering Limited

VIBRATION, SHOCK AND NOISE CONTROL

P.O. BOX 36, CORNGREAVES ROAD, CRADLEY HEATH, WEST MIDLANDS B64 7DQ

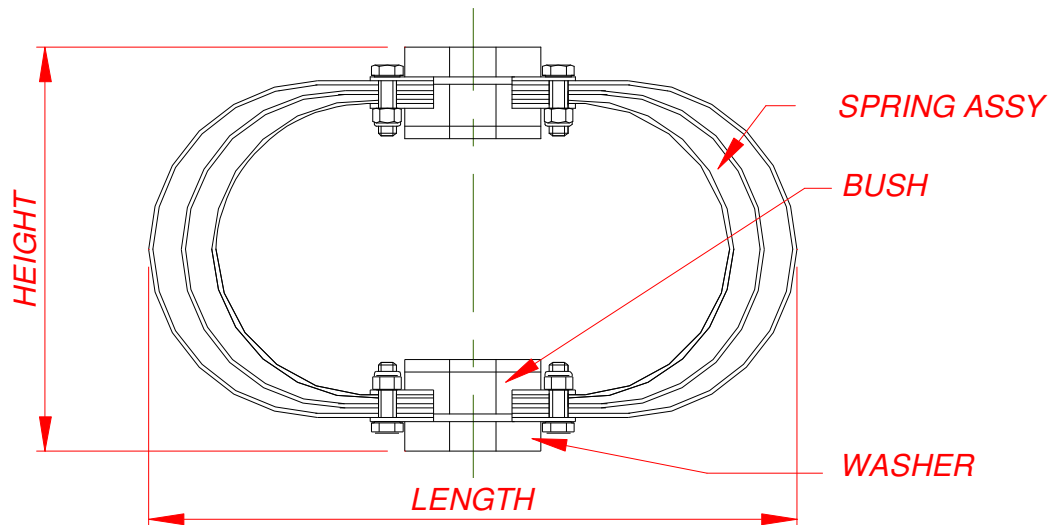
Telephone: 01384 563220 Fax: 01384 563225 E-mail: sales@cmt-dynamics.co.uk

Web Site: www.cmt-dynamics.co.uk

Due to a policy of continuous development and improvement CMT reserve the right to alter specifications without notice.

Type 'X'

(Continued from page 1)



X Mounts Basic Range

NATO Stock Number	CMT Part Number	Rating	Supported Mass Range	Dimensions					Approx. Weight
				Height Loaded	Height Unloaded	Length	Width	Bolt	
5340-99-923-5717	14/900U	10	9 - 18	107	114	203	51	M8	0.68
5340-99-923-5718	14/901U	20	18 - 35	106	114	203	51	M8	0.8
5340-99-923-5719	14/902U	45	35 - 55	124	133	216	51	M12	1.02
5340-99-923-5720	14/903U	70	55 - 90	124	133	216	51	M12	1.13
5340-99-923-5721	14/904U	110	90 - 135	122	133	216	51	M12	1.25
5340-99-520-8429	14/905U	180	135 - 250	185	190	297	102	M20	5.9
5340-99-520-8428	14/906U	320	250 - 380	186	190	297	102	M20	6.58
5340-99-520-8427	14/907U	450	380 - 550	184	190	297	102	M20	7.26

Special Range

NATO Stock Number	CMT Part Number	Rating	Supported Mass Range	Dimensions					Approx. Weight
				Height Loaded	Height Unloaded	Length	Width	Bolt	
5340-99-665-3921	14/899U	6 A	4.8 - 7.2	73	82	134	25	M8	0.13
Not Allocated	14/897U	6 B	4.8 - 7.2	75	82	134	25	M8	0.13
Not Allocated	14/898U	6 S	5.4 - 10.8	107	114	203	30	M8	0.45
5340-99-591-2857	14/909U	150	135 - 175	122	134	216	51	M12	1.25
5340-99-923-6107	14/908U	450	380 - 550	200	209	365	51	M20	7.2