



MASON INDUSTRIES, Inc.

MERCER RUBBER Co.

350 Rabro Drive, Hauppauge, NY 11788
Mason- 631/348-0282 • Info@Mason-Ind.com
Mercer- 631/582-1524 • Info@Mercer-Rubber.com
FAX 631/348-0279

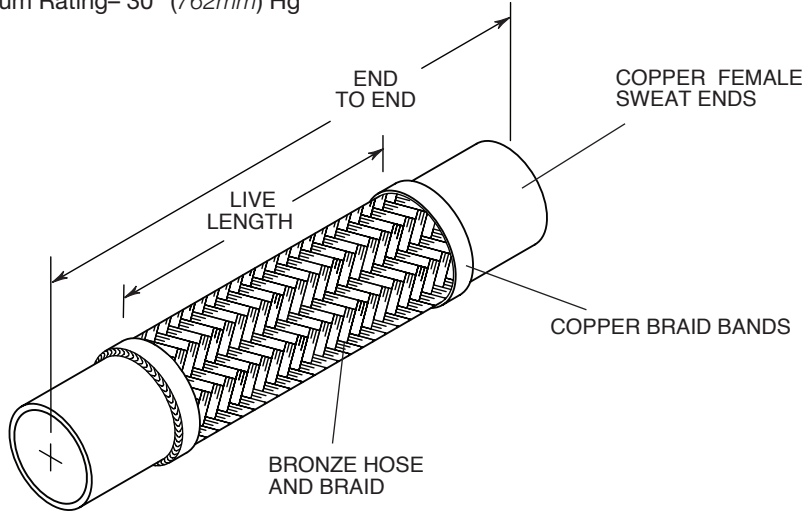


JOB NAME _____
CUSTOMER _____
CUSTOMER P.O. _____
MASON M. _____
DWG No. _____

CPSB

**BRAIDED
BRONZE
HOSE with
COPPER
SWEAT ENDS**

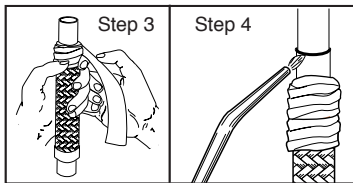
Full Vacuum Rating- 30" (762mm) Hg



**Industry Standard
Pump Connectors**
Short lengths conserve
space but allow minimum
motion and attenuation.
Offset Ratings are
industry standard.

INSTALLATION:

1. Thoroughly clean male and female ends using steel wool and steel brushes.
2. Apply flux.
3. Wrap base of copper fitting on connector and 2" (50mm) of the braid with a wet cloth to prevent overheating during soldering.
4. Direct the torch away from the base of the copper fitting and braided section. Avoid contact of the flame with the base of the copper fitting and braid. Heat end of copper fitting for proper flow of silver solder. Silver solder flows at approximately 430°F (221°C).
5. Use caution with brazing rod or other higher temperature techniques. Overheating will cause leaks.
6. Remove wet cloth and remove all soldering flux immediately after installation. Flux chlorides will cause premature failure of joint.



**RATED PRESSURES @
ELEVATED TEMPERATURES (psi) (kg/cm²)**

Hose Size (in) (mm)	150°F 66°C	300°F 149°C	400°F 204°C
	Factor 0.92	Factor 0.83	Factor 0.78
1/2 15	460 32	415 29	390 27
3/4 20	432 30	390 27	367 25
1 25	414 29	373 26	351 24
1 1/4 32	368 25	332 23	312 22
1 1/2 40	308 21	278 19	261 18
2 50	216 15	195 13	183 13
2 1/2 65	212 15	191 13	179 12
3 80	207 14	187 12	175 12
4 100	202 14	183 12	172 12

When using CPSB products in stainless steel water systems, dielectric unions must be used on each end to prevent leakage from galvanic action.

CPSB DIMENSIONS AND PRESSURE RATINGS (American Units)

Type	Tubing Size & End to End (in)	Live Length (in)	Corrugations per foot	Maximum Permanent Lateral Offset (in)	Rated Pressure @70°F (psi)
CPSB	1/2 X 6 1/2	23/4	73	1/8	500
CPSB	3/4 X 7	23/4	67	1/8	470
CPSB	1 X 8	33/8	58	1/8	450
CPSB	1 1/4 X 8 1/2	33/4	55	1/8	400
CPSB	1 1/2 X 9	4	53	1/8	335
CPSB	2 X 12	6 1/2	51	1/4	235
CPSB	2 1/2 X 12	4 3/4	34	1/8	230
CPSB	3 X 12	4 1/2	30	1/8	225
CPSB	4 X 18	9 1/2	28	1/2	220

CPSB DIMENSIONS AND PRESSURE RATINGS (Metric Units)

Type	Tubing Size & End to End (mm)	Live Length (mm)	Corrugations per meter	Maximum Permanent Lateral Offset (mm)	Rated Pressure @21°C (kg/cm²)
CPSB	15 X 165	70	240	3	37
CPSB	20 X 178	70	220	3	32
CPSB	25 X 203	86	190	3	31
CPSB	32 X 216	95	180	3	28
CPSB	40 X 229	102	174	3	23
CPSB	50 X 305	165	167	6	16
CPSB	65 X 305	121	112	3	16
CPSB	80 X 305	114	98	3	15
CPSB	100 X 457	241	92	13	15

End to End Tolerance: minus 1% plus 3%. Minimum Burst is four times the Rated Pressure. Safety factor of 4.
Female end fits over copper tubing, e.g. 1/2 x 6 1/2 (15 x 165mm) fits over 1/2" (15mm) tubing.
Lateral Offset one side of centerline and normal machinery vibration. If intermittent in both directions, reduce by 50%.

QTY	SIZE	TAG

QTY	SIZE	TAG



MASON INDUSTRIES, Inc.

MERCER RUBBER Co.

350 Rabro Drive, Hauppauge, NY 11788
 Mason- 631/348-0282 • Info@Mason-Ind.com
 Mercer- 631/582-1524 • Info@Mercer-Rubber.com
 FAX 631/348-0279

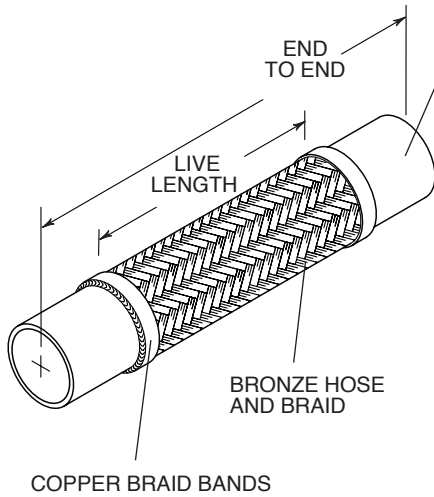


JOB NAME _____
 CUSTOMER _____
 CUSTOMER P.O. _____
 MASON M. _____
 DWG No. _____

CPSB

**BRAIDED
 BRONZE
 HOSE with
 COPPER
 SWEAT ENDS**

Full Vacuum Rating- 30" (762mm) Hg



COPPER FEMALE
 SWEAT ENDS

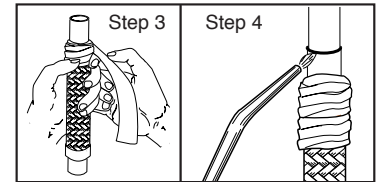
INSTALLATION:

1. Thoroughly clean male and female ends using steel wool and steel brushes.
2. Apply flux.
3. Wrap base of copper fitting on connector and 2" (50mm) of the braid with a wet cloth to prevent overheating during soldering.
4. Direct the torch away from the base of the copper fitting and braided section. Avoid contact of the flame with the base of the copper fitting and braid. Heat end of copper fitting for proper flow of silver solder. Silver solder flows at approximately 430°F (221°C).
5. Use caution with brazing rod or other higher temperature techniques. Overheating will cause leaks.
6. Remove wet cloth and remove all soldering flux immediately after installation. Flux chlorides will cause premature failure of joint.

When using CPSB products in stainless steel water systems, dielectric unions must be used on each end to prevent leakage from galvanic action.

**RATED PRESSURES @
 ELEVATED TEMPERATURES (psi) (kg/cm²)**

Hose Size (in) (mm)	150°F 66°C	300°F 149°C	400°F 204°C
	Factor 0.92	Factor 0.83	Factor 0.78
1/2 15	460 32	415 29	390 27
3/4 20	432 30	390 27	367 25
1 25	414 29	373 26	351 24
1 1/4 32	368 25	332 23	312 22
1 1/2 40	308 21	278 19	261 18
2 50	216 15	195 13	183 13
2 1/2 65	212 15	191 13	179 12
3 80	207 14	187 12	175 12
4 100	202 14	183 12	172 12



CPSB DIMENSIONS AND PRESSURE RATINGS (American Units)

Type	Tubing Size & End to End (in)	Live Length (in)	Corrugations per foot	Maximum Permanent Lateral Offset (in)	Rated Pressure @70°F (psi)
CPSB	1/2 X 12	81/4	73	1	500
CPSB	1/2 X 18	141/4	73	3	500
CPSB	1/2 X 24	201/4	73	6	500
CPSB	1/2 X 36	321/4	73	12 1/2	500
CPSB	3/4 X 12	73/4	67	3/4	470
CPSB	3/4 X 18	133/4	67	2 1/2	470
CPSB	3/4 X 24	193/4	67	5 1/2	470
CPSB	3/4 X 36	313/4	67	11	470
CPSB	1 X 12	73/8	58	5/8	450
CPSB	1 X 18	133/8	58	2 1/4	450
CPSB	1 X 24	193/8	58	5	450
CPSB	1 X 36	313/8	58	8 1/2	450
CPSB	1 1/4 X 12	71/4	55	1/2	400
CPSB	1 1/4 X 18	131/4	55	13/4	400
CPSB	1 1/4 X 24	191/4	55	4	400
CPSB	1 1/4 X 36	311/4	55	8	400
CPSB	1 1/2 X 12	7	53	1/2	335
CPSB	1 1/2 X 18	13	53	1 1/2	335
CPSB	1 1/2 X 24	19	53	3 1/2	335
CPSB	1 1/2 X 36	31	53	7 1/2	335
CPSB	2 X 12	61/2	51	1/4	235
CPSB	2 X 18	121/2	51	13/8	235
CPSB	2 X 24	181/2	51	3 1/4	235
CPSB	2 X 36	301/2	51	7	235
CPSB	2 1/2 X 18	103/4	34	7/8	230
CPSB	2 1/2 X 24	163/4	34	2	230
CPSB	2 1/2 X 36	283/4	34	4 1/2	230
CPSB	3 X 18	101/2	30	3/4	225
CPSB	3 X 24	161/2	30	1 1/2	225
CPSB	3 X 36	281/2	30	4 1/4	225
CPSB	4 X 24	151/2	28	1 1/4	220
CPSB	4 X 36	271/2	28	4	220

CPSB DIMENSIONS AND PRESSURE RATINGS (Metric Units)

Type	Tubing Size & End to End (mm)	Live Length (mm)	Corrugations per meter	Maximum Permanent Lateral Offset (mm)	Rated Pressure @21°C (kg/cm ²)
CPSB	15 X 305	210	240	25	34
CPSB	15 X 457	362	240	76	34
CPSB	15 X 610	514	240	152	34
CPSB	15 X 915	819	240	318	34
CPSB	20 X 305	197	220	19	32
CPSB	20 X 457	349	220	64	32
CPSB	20 X 610	502	220	140	32
CPSB	20 X 915	806	220	279	32
CPSB	25 X 305	187	190	16	31
CPSB	25 X 457	340	190	57	31
CPSB	25 X 610	492	190	127	31
CPSB	25 X 915	797	190	216	31
CPSB	32 X 305	184	180	13	28
CPSB	32 X 457	337	180	44	28
CPSB	32 X 610	489	180	102	28
CPSB	32 X 915	793	180	203	28
CPSB	40 X 305	178	174	13	23
CPSB	40 X 457	330	174	38	23
CPSB	40 X 610	483	174	89	23
CPSB	40 X 915	787	174	191	23
CPSB	50 X 305	165	167	6	16
CPSB	50 X 457	318	167	35	16
CPSB	50 X 610	470	167	83	16
CPSB	50 X 915	775	167	178	16
CPSB	65 X 457	273	112	22	16
CPSB	65 X 610	425	112	51	16
CPSB	65 X 915	730	112	114	16
CPSB	80 X 457	267	98	19	15
CPSB	80 X 610	419	98	38	15
CPSB	80 X 915	724	98	108	15
CPSB	100 X 610	394	92	32	15
CPSB	100 X 915	699	92	102	15

End to End Tolerance: minus 1% plus 3%. Minimum Burst is four times the Rated Pressure. Safety factor of 4.
 Female end fits over copper tubing, e.g. 1/2 x 12 (15 x 305mm) fits over 1/2" (15mm) tubing.
 Lateral Offset one side of centerline and normal machinery vibration. If intermittent in both directions, reduce by 50%.

QTY	SIZE	TAG

QTY	SIZE	TAG