



MASON INDUSTRIES, Inc.

MERCER RUBBER Co.

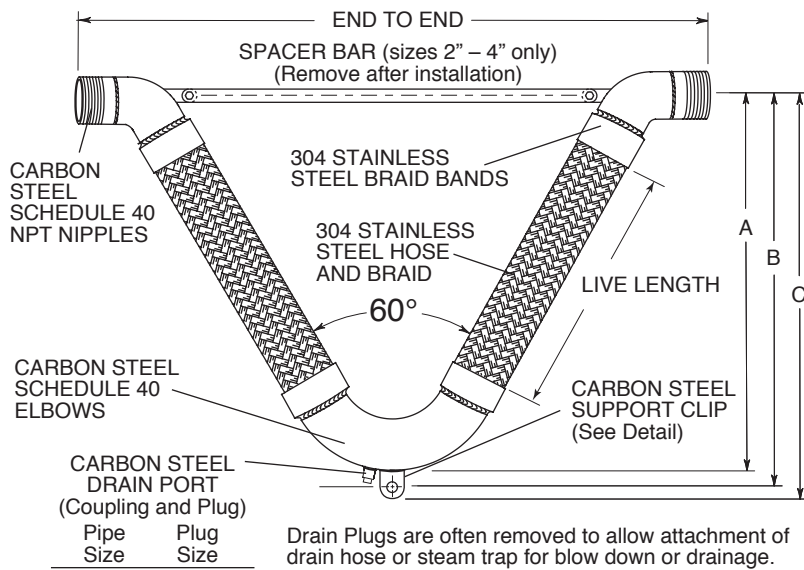
350 Rabro Drive, Hauppauge, NY 11788
 Mason- 631/348-0282 • Info@Mason-Ind.com
 Mercer- 631/582-1524 • Info@Mercer-Rubber.com
 FAX 631/348-0279



JOB NAME _____
 CUSTOMER _____
 CUSTOMER P.O. _____
 MASON M. _____
 DWG No. _____

CSAVMN

60°vee SS BRAIDED HOSE with CARBON STEEL THREADED NIPPLES



Pipe Size	Plug Size
1/2" - 1"	None
1 1/4" - 1 1/2"	1/4"
2" - 4"	1/2"

Drain Plugs are often removed to allow attachment of drain hose or steam trap for blow down or drainage.

OPTIONAL FITTINGS MATERIAL
as checked below

Stainless Steel

RATED MOVEMENTS

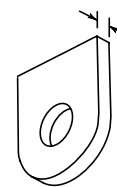
±4" (100mm) All Directional Seismic Movement
 ±6" (150mm) Guided Thermal Movement Only



These assemblies have been "CSA International" approved for use on gas pipelines. "CSA International" is the current certification agency for gas industry products, assuming the authority formerly associated with the American Gas Association (AGA).

Our Certification Report is #230720-1764990. This Certification meets all requirements of ANSI/UL #536 2003 Standards for Flexible Metal Hose.

CLIP THICKNESS



SUPPORT CLIP DETAIL

SUPPORT CLIP

Pipe Size (in) (mm)	SUPPORT CLIP Hole Diameter (in) (mm)	Thickness (in) (mm)
1/2 15	1/2 16	1/8 3
3/4 20	1/2 16	1/8 3
1 25	1/2 16	1/8 3
1 1/4 32	1/2 16	1/8 3
1 1/2 40	1/2 16	1/8 3
2 50	5/8 16	1/8 3
2 1/2 65	5/8 16	1/8 3
3 80	3/4 19	1/8 3
4 100	3/4 19	1/8 3

CSAVMN DIMENSIONS AND PRESSURE RATINGS (American Units)

Pipe Size & End to End (in)	Live Length (in)	Corrugations per foot	A (in)	B (in)	C (in)	Rated Pressure @70°F (psi)	Min Burst Pressure (psi)	Safety Factor
1/2 X 23 1/2	14	92	15 1/8	157/8	163/8	175	4300	25
3/4 X 24	15	80	16 1/8	167/8	173/8	175	3168	18
1 X 26	16	72	177/8	185/8	191/8	175	3132	18
1 1/4 X 29	17	67	18 1/2	191/4	193/4	175	2656	15
1 1/2 X 32	19	63	20 3/4	211/2	22	175	2284	13
2 X 36	20	58	23 1/4	241/4	25	175	2120	12
2 1/2 X 41	22	48	26	27	27 3/4	175	1724	10
3 X 46	24	46	28 7/8	30 1/8	31 1/8	175	1564	9
4 X 55	26	32	32 1/2	33 3/4	34 3/4	175	1160	7

CSAVMN DIMENSIONS AND PRESSURE RATINGS (Metric Units)

Pipe Size & End to End (mm)	Live Length (mm)	Corrugations per meter	A (mm)	B (mm)	C (mm)	Rated Pressure @21°C (kg/cm²)	Min Burst Pressure (kg/cm²)	Safety Factor
15 X 597	356	302	384	403	416	12	302	25
20 X 610	381	262	410	429	441	12	222	18
25 X 660	406	236	454	473	486	12	220	18
32 X 737	432	220	470	489	502	12	186	15
40 X 813	483	207	527	546	559	12	160	13
50 X 914	508	190	591	616	635	12	149	12
65 X 1041	559	157	660	686	705	12	121	10
80 X 1168	610	151	733	765	791	12	109	9
100 X 1397	660	105	826	857	883	12	81	7

End to End Tolerance: minus 1% plus 3%. Minimum Burst is four times the Rated Pressure. Safety factor of 4.

QTY	SIZE	TAG

QTY	SIZE	TAG