



MASON INDUSTRIES, Inc.

MERCER RUBBER Co.

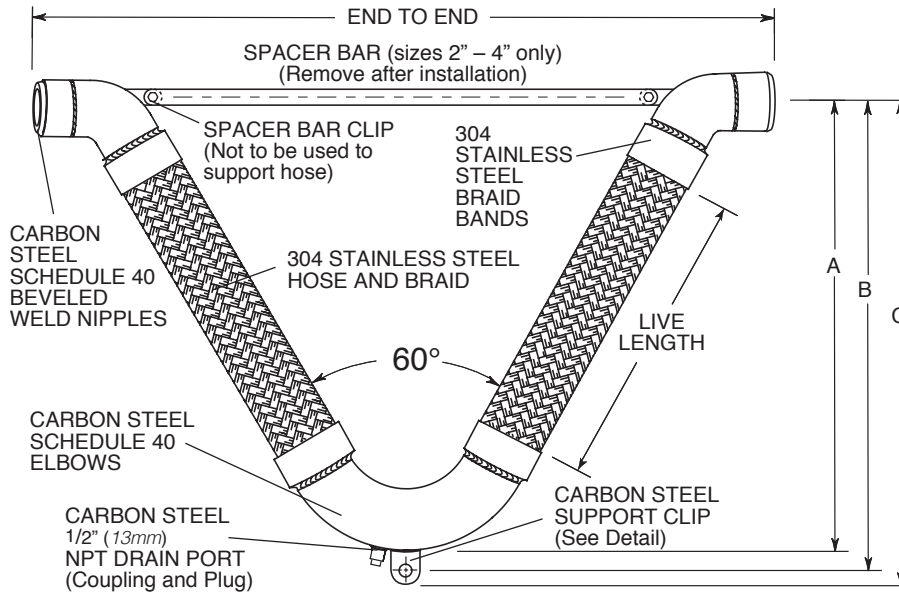
350 Rabro Drive, Hauppauge, NY 11788
Mason- 631/348-0282 • Info@Mason-Ind.com
Mercer- 631/582-1524 • Info@Mercer-Rubber.com
FAX 631/348-0279



JOB NAME _____
CUSTOMER _____
CUSTOMER P.O. _____
MASON M. _____
DWG No. _____

CSAVWN

**60° Vee SS BRAIDED
HOSE with CARBON
STEEL WELD
NIPPLES**



Drain Plugs are often removed to allow attachment of drain hose or steam trap for blow down or drainage.

OPTIONAL FITTINGS MATERIAL
as checked below

Stainless Steel

RATED MOVEMENTS

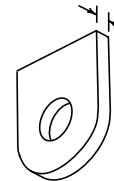
±4" (100mm) All Directional Seismic Movement
±6" (150mm) Guided Thermal Movement Only



These assemblies have been "CSA International" approved for use on gas pipelines. "CSA International" is the current certification agency for gas industry products, assuming the authority formerly associated with the American Gas Association (AGA).

Our Certification Report is #230720-1764990. This Certification meets all requirements of ANSI/UL #536 2003 Standards for Flexible Metal Hose.

CLIP THICKNESS



SUPPORT CLIP DETAIL

SUPPORT CLIP

Pipe Size (in) (mm)	SUPPORT CLIP Hole Diameter (in) (mm)	Thickness (in) (mm)
1/2 15	1/2 16	1/8 3
3/4 20	1/2 16	1/8 3
1 25	1/2 16	1/8 3
1 1/4 32	1/2 16	1/8 3
1 1/2 40	1/2 16	1/8 3
2 50	5/8 16	1/8 3
2 1/2 65	5/8 16	1/8 3
3 80	3/4 19	1/8 3
4 100	3/4 19	1/8 3

CSAVWN DIMENSIONS AND PRESSURE RATINGS (American Units)

Pipe Size & End to End (in)	Live Length (in)	Corrugations per foot	A (in)	B (in)	C (in)	Rated Pressure @70°F (psi)	Min Burst Pressure (psi)	Safety Factor
1/2 X 21 1/2	14	92	151/8	157/8	163/4	175	4300	25
3/4 X 22	15	80	161/8	167/8	173/8	175	3168	18
1 X 24	16	72	177/8	185/8	191/8	175	3132	18
1 1/4 X 27	17	67	181/2	191/4	193/4	175	2656	15
1 1/2 X 30	19	63	203/4	211/2	22	175	2284	13
2 X 33 1/2	20	58	231/4	241/4	25	175	2120	12
2 1/2 X 38	22	48	26	27	273/4	175	1724	10
3 X 43	24	46	287/8	301/8	311/8	175	1564	9
4 X 52	26	32	321/2	333/4	343/4	175	1160	7

CSAVWN DIMENSIONS AND PRESSURE RATINGS (Metric Units)

Pipe Size & End to End (mm)	Live Length (mm)	Corrugations per meter	A (mm)	B (mm)	C (mm)	Rated Pressure @21°C (kg/cm²)	Min Burst Pressure (kg/cm²)	Safety Factor
15 X 546	356	302	384	403	416	12	302	25
20 X 559	381	262	410	429	441	12	222	18
25 X 610	406	236	454	473	486	12	220	18
32 X 686	432	220	470	489	502	12	186	15
40 X 762	483	207	527	546	559	12	160	13
50 X 851	508	190	591	616	635	12	149	12
65 X 965	559	157	660	686	705	12	121	10
80 X 1092	610	151	733	765	791	12	109	9
100 X 1321	660	105	826	857	883	12	81	7

End to End Tolerance: minus 1% plus 3%.

QTY	SIZE	TAG

QTY	SIZE	TAG