



MASON INDUSTRIES, Inc.

MERCER RUBBER Co.

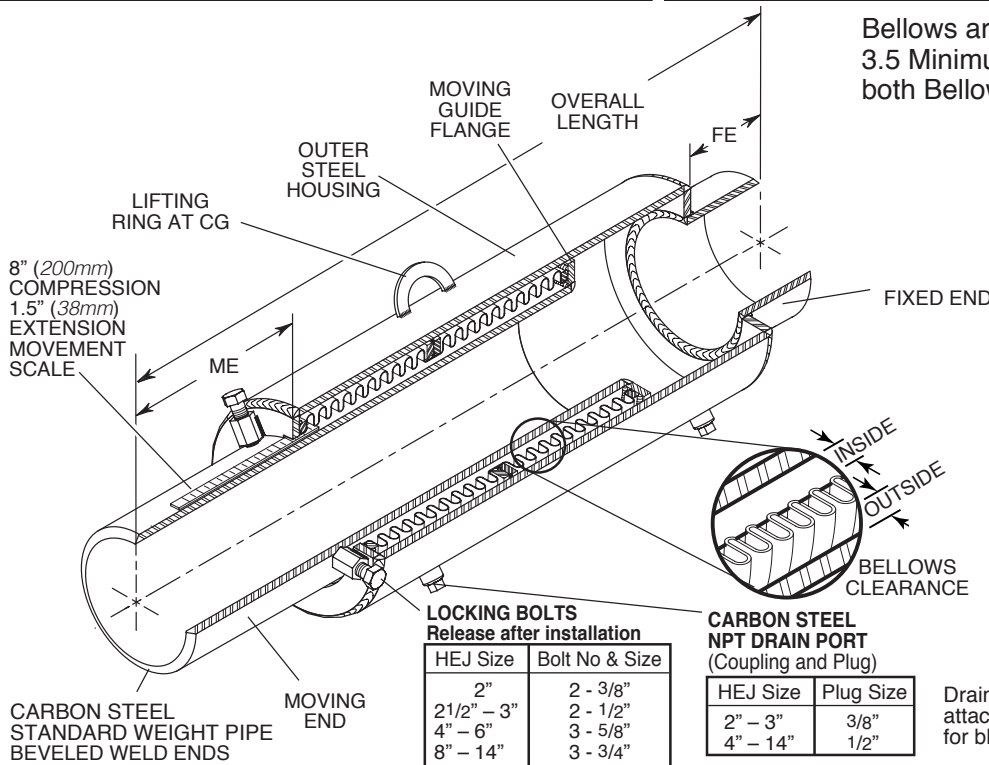
350 Rabro Drive, Hauppauge, NY 11788
 Mason- 631/348-0282 • Info@Mason-Ind.com
 Mercer- 631/582-1524 • Info@Mercer-Rubber.com
 FAX 631/348-0279



JOB NAME _____
 CUSTOMER _____
 CUSTOMER P.O. _____
 MASON M. _____
 DWG No. _____

HEJW8

8" (200mm) Movement
HOUSED
EXPANSION
JOINT with CARBON
STEEL WELD ENDS



Bellows are externally pressurized.
 3.5 Minimum Safety Factor for
 both Bellows and Housing.

PRESSURE REDUCTION TABLE

| Temperature (°F) (°C) | Rated Pressure (psi)(kg/cm ²) |
|--------------------------|---|
| 200 93 | 205 14.4 |
| 250 121 | 198 13.9 |
| 300 149 | 191 13.4 |
| 400 204 | 176 12.4 |
| 500 260 | 173 12.2 |
| 600 316 | 171 12.0 |
| 700 371 | 167 11.7 |
| 800 427 | Not Recommended |

2 PLY 304 STAINLESS
 STEEL BELLOWS
 Sizes 2 to 3- 4 Sections
 Sizes 4 to 6- 3 Sections
 Sizes 8-14- 2 Sections
 Clearance on both sides
 to eliminate wear

Full Vacuum Rating- 30" (762mm) Hg

LOCKING BOLTS
 Release after installation

| HEJ Size | Bolt No & Size |
|-------------|----------------|
| 2" | 2 - 3/8" |
| 2 1/2" - 3" | 2 - 1/2" |
| 4" - 6" | 3 - 5/8" |
| 8" - 14" | 3 - 3/4" |

CARBON STEEL
 NPT DRAIN PORT
 (Coupling and Plug)

| HEJ Size | Plug Size |
|----------|-----------|
| 2" - 3" | 3/8" |
| 4" - 14" | 1/2" |

Drain Plugs are often removed to allow
 attachment of drain hose or steam trap
 for blow down or drainage.

HEJW8 DIMENSIONS AND PRESSURE RATINGS (American & Metric Units) 8" (200mm) COMPRESSION, 1.5" (38mm) EXTENSION

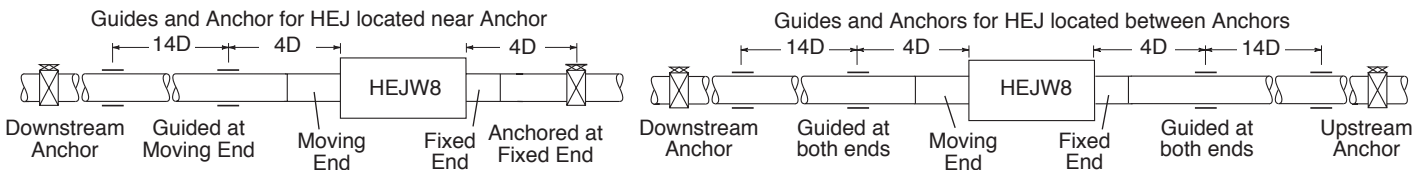
| Type & Size | Pipe Size (in) (mm) | Overall Length (in) (mm) | ME | | FE | | Outer Housing O.D. (in) (mm) | Nominal Bellows Clearance | | Spring Rate (lbs/in) (kg/cm) | Thrust [®] | | Rated Pressure @70°F @21°C (psi) (kg/cm ²) | Ship Wt. (lbs) (kg) |
|-------------|---------------------|--------------------------|--------------------------|------------------|------------------|------------------|------------------------------|---------------------------|-------------------|------------------------------|---------------------|--------------------------------------|--|---------------------|
| | | | Neutral Length (in) (mm) | Length (in) (mm) | Length (in) (mm) | Length (in) (mm) | | Inside (in) (mm) | Outside (in) (mm) | | 225 psi (lbs) (kg) | 15.5 bar (psi) (kg/cm ²) | | |
| HEJW8-2 | 2 50 | 40 1016 | 9 1/2 241 | 11 1/2 38 | 59/16 141 | 0.39 10 | 0.39 10 | 83 15 | 2500 1134 | 225 16 | 86 39 | | | |
| HEJW8-2 1/2 | 2 1/2 65 | 40 1016 | 9 1/2 241 | 11 1/2 38 | 59/16 141 | 0.25 6 | 0.25 6 | 118 21 | 2700 1225 | 225 16 | 94 43 | | | |
| HEJW8-3 | 3 80 | 40 1016 | 9 1/2 241 | 11 1/2 38 | 65/8 168 | 0.32 8 | 0.33 8 | 120 22 | 3900 1769 | 225 16 | 114 52 | | | |
| HEJW8-4 | 4 100 | 40 1016 | 9 1/2 241 | 11 1/2 38 | 85/8 219 | 0.49 12 | 0.35 9 | 150 27 | 6900 3130 | 225 16 | 156 71 | | | |
| HEJW8-5 | 5 125 | 42 1/2 1080 | 10 254 | 2 1/2 64 | 95/8 244 | 0.39 10 | 0.41 10 | 200 36 | 9500 4309 | 225 16 | 170 77 | | | |
| HEJW8-6 | 6 150 | 42 1/2 1080 | 10 254 | 2 1/2 64 | 103/4 273 | 0.39 10 | 0.39 10 | 250 45 | 12600 5715 | 225 16 | 275 125 | | | |
| HEJW8-8 | 8 200 | 42 1/2 1080 | 10 254 | 2 1/2 64 | 123/4 384 | 0.39 10 | 0.39 10 | 300 54 | 19000 8618 | 225 16 | 320 145 | | | |
| HEJW8-10 | 10 250 | 42 1/2 1080 | 10 254 | 2 1/2 64 | 16 406 | 0.53 13 | 0.53 13 | 400 72 | 30000 13608 | 225 16 | 430 195 | | | |
| HEJW8-12 | 12 300 | 42 1/2 1080 | 10 254 | 2 1/2 64 | 18 457 | 0.42 11 | 0.41 10 | 588 105 | 40000 18144 | 225 16 | 570 259 | | | |
| HEJW8-14 | 14 350 | 45 1/2 1156 | 10 254 | 2 1/2 64 | 20 508 | 0.43 11 | 0.42 11 | 700 125 | 64000 29030 | 225 16 | 705 320 | | | |

Lower Thrust Forces in proportion at lower pressures, i.e. 100 psi Force = 100/225 x published Thrust. Forces on Pipe Anchors must include Thrust Force and Spring Force. Spring Force is determined by multiplying the joint Spring Rate by its Thermal Movement. (in/mm)

HEJ's installed in piping systems must be anchored on both sides of the joint. HEJ's installed in unanchored piping must have control rods.

When using HEJW products in copper or brass water or steam systems, dielectric unions must be used on each end to prevent leakage from galvanic action.

GUIDE SPACING - Referencing Pipe Diameter "D"



Plus an additional 5" (125mm) for Sizes 2 & 2 1/2

| QTY | SIZE | TAG |
|-----|------|-----|
| | | |
| | | |
| | | |

| QTY | SIZE | TAG |
|-----|------|-----|
| | | |
| | | |
| | | |