



MASON INDUSTRIES, Inc.

MERCER RUBBER Co.

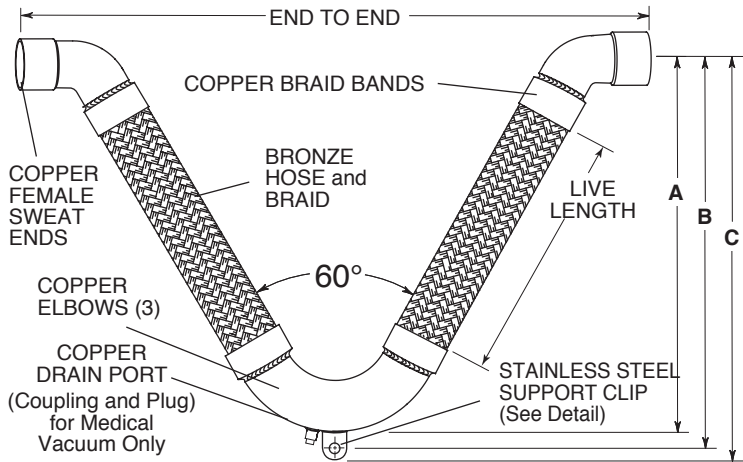
350 Rabro Drive, Hauppauge, NY 11788
 Mason- 631/348-0282 • Info@Mason-Ind.com
 Mercer- 631/582-1524 • Info@Mercer-Rubber.com
 FAX 631/348-0279



JOB NAME _____
 CUSTOMER _____
 CUSTOMER P.O. _____
 MASON M. _____
 DWG No. _____

VCPSBMG

MEDICAL GAS RATED
 BRONZE BRAIDED
 60° VEE HOSE WITH
 COPPER FEMALE
 SWEAT ENDS



NOTE: VCPSBMG hoses are cleaned and bagged for medical gas applications. Manufactured in accordance with NFPA99 Requirements.

STAINLESS STEEL SUPPORT CLIP

Pipe Size (in) (mm)	SUPPORT CLIP Hole Diameter (in) (mm)	Thickness (in) (mm)
1/2 13	1/2 13	1/8 3
3/4 20	1/2 13	1/8 3
1 25	1/2 13	1/8 3
1 1/4 32	1/2 13	1/8 3
1 1/2 40	1/2 13	1/8 3
2 50	5/8 16	1/8 3
2 1/2 65	5/8 16	1/8 3
3 80	3/4 19	1/8 3
4 100	3/4 19	1/8 3

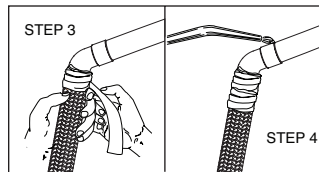


Pipe Size	Plug Size
1/2" - 1"	None
1 1/4" - 1 1/2"	1/4"
2" - 4"	1/2"

Drain Plugs are often removed to allow attachment of drain hose for blow down or drainage.

INSTALLATION:

1. Thoroughly clean male and female ends using steel wool and steel brushes.
2. Nitrogen purge- flux not permitted.
3. Wrap base of copper fitting on connector and 2" (50mm) of the braid with a wet cloth to prevent overheating during soldering.
4. Direct the torch away from the base of the copper fitting and braided section. Avoid contact of the flame with the base of the copper fitting and braid. Heat end of copper fitting for proper flow of silver solder. Silver solder flows at approximately 430°F (221°C).
5. Use caution with brazing rod or other higher temperature techniques. Overheating will cause leaks.
6. Remove wet cloth immediately after installation.



RATED PRESSURES @ ELEVATED TEMPERATURES (psi) (kg/cm²)

Hose Size	150°F 66°C Factor 0.92		300°F 149°C Factor 0.83		400°F 204°C Factor 0.78		
	1/2 13	460 32	415 29	390 27	3/4 20	435 31	395 28
1 25	415 29	375 26	300 25	1 1/4 32	365 26	330 23	310 22
1 1/2 40	315 22	285 20	270 19	2 50	285 20	260 18	245 17
2 1/2 65	250 18	225 16	210 15	3 80	240 17	215 15	205 14
4 100	230 16	210 14	195 13				

When using VCPSBMG products in stainless steel water systems, dielectric unions must be used on each end to prevent leakage from galvanic action.

RATED MOVEMENTS

±4" (100mm) All Directional Seismic Movement
 ±6" (150mm) Guided Thermal Movement Only

Full Vacuum Rating- 30" (762mm) Hg

VCPSBMG DIMENSIONS AND PRESSURE RATINGS (American Units)

Tubing Size & End to End (in)	Live Length (in)	Corrugations per foot	A (in)	B (in)	C (in)	Rated Pressure @70°F (psi)
1/2x211/2	14	73	15	153/4	161/4	500
3/4x215/8	15	67	153/4	161/2	17	475
1x243/8	16	58	17	173/4	181/4	450
1 1/4x263/4	17	55	183/8	191/8	195/8	400
1 1/2x301/8	19	53	205/8	213/8	217/8	345
2x343/8	20	51	221/2	231/2	241/4	310
2 1/2x40	22	34	257/8	267/8	275/8	270
3x45	24	30	285/8	297/8	307/8	260
4x531/8	26	28	323/8	335/8	345/8	250

VCPSBMG DIMENSIONS AND PRESSURE RATINGS (Metric Units)

Tubing Size & End to End (mm)	Live Length (mm)	Corrugations per meter	A (mm)	B (mm)	C (mm)	Rated Pressure @21°C (kg/cm²)
15x546	356	240	381	400	413	35
20x549	381	220	400	419	432	33
25x594	406	190	432	451	464	32
32x679	432	180	467	486	498	28
40x765	483	174	524	543	556	24
50x873	508	167	572	597	616	21
65x1016	559	112	657	683	702	19
80x1143	610	98	727	759	784	18
100x1349	660	92	822	854	879	17

Female end fits over copper tubing, e.g. 1/2 x 211/2 (15 x 546mm) fits over 1/2" (15mm) tubing.

End to End Tolerance: minus 1% plus 3%. Minimum Burst is four times the Rated Pressure. Safety factor of 4.

QTY	SIZE	TAG

QTY	SIZE	TAG