



MASON INDUSTRIES, Inc.

MERCER RUBBER Co.

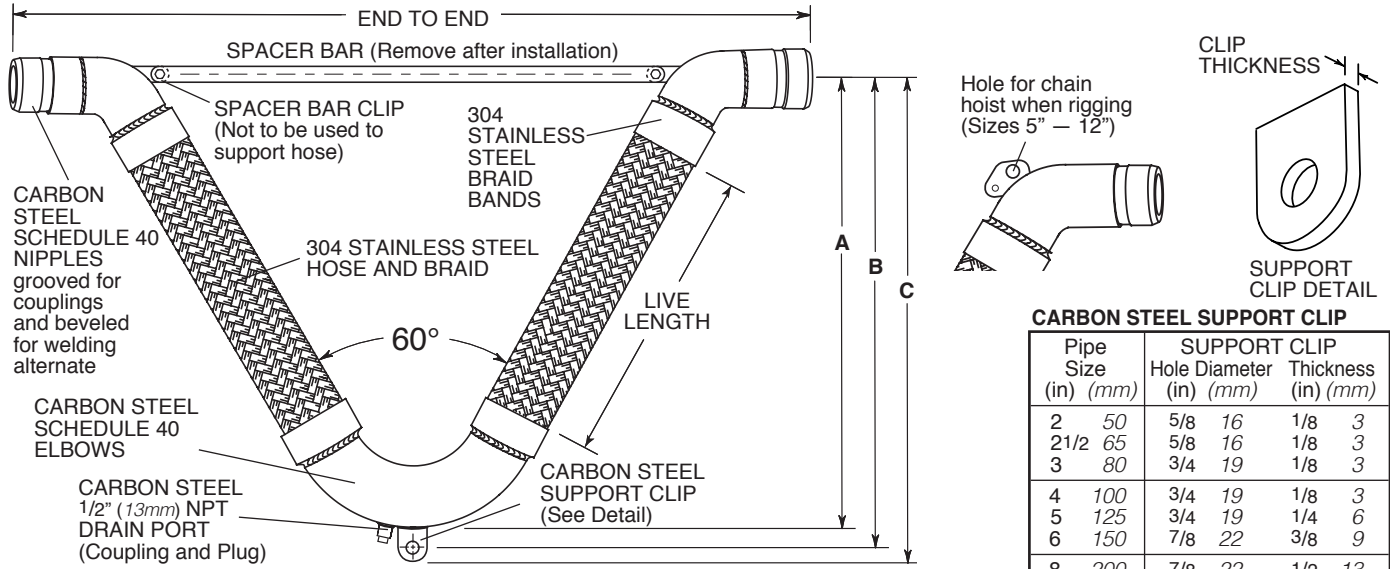
350 Rabro Drive, Hauppauge, NY 11788  
 Mason- 631/348-0282 • Info@Mason-Ind.com  
 Mercer- 631/582-1524 • Info@Mercer-Rubber.com  
 FAX 631/348-0279



JOB NAME \_\_\_\_\_  
 CUSTOMER \_\_\_\_\_  
 CUSTOMER P.O. \_\_\_\_\_  
 MASON M. \_\_\_\_\_  
 DWG No. \_\_\_\_\_

**VGWN**

**60° Vee SS BRAIDED HOSE with CARBON STEEL GROOVED WELD NIPPLES**



Drain Plugs are often removed to allow attachment of drain hose or steam trap for blow down or drainage.

**CARBON STEEL SUPPORT CLIP**

Pipe Size (in) (mm)	SUPPORT CLIP Hole Diameter (in) (mm)	Thickness (in) (mm)
2 50	5/8 16	1/8 3
2 1/2 65	5/8 16	1/8 3
3 80	3/4 19	1/8 3
4 100	3/4 19	1/8 3
5 125	3/4 19	1/4 6
6 150	7/8 22	3/8 9
8 200	7/8 22	1/2 13
10 250	1 25	1/2 13
12 300	1 25	1/2 13

**RATED PRESSURES @**

**ELEVATED TEMPERATURES (psi) (kg/cm<sup>2</sup>)**

Hose Size (in) (mm)	250°F 121°C	350°F 176°C	450°F 232°C
	Factor 0.92	Factor 0.86	Factor 0.81
2 50	330 23	310 21	290 20
2 1/2 65	270 19	250 17	235 16
3 80	260 18	240 16	230 16
4 100	210 15	200 14	190 13
5 125	190 13	180 12	170 11
6 150	190 13	180 12	170 11
8 200	190 13	180 12	170 11
10 250	160 11	150 10	140 9
12 300	160 11	150 10	140 9

**SATURATED STEAM**

**RECOMMENDED PRESSURE LIMITS**

Size (in) (mm)	Max Gauge (psi) (kg/cm <sup>2</sup> )	Temp Reference (°F) (°C)
2 50	150 11	362 183
2 1/2 65	125 9	355 179
3 80	125 9	355 179
4 100	125 9	355 179
5 125	100 7	337 169
6 150	100 7	337 169
8 200	75 5	320 160
10 250	60 4	307 153
12 300	60 4	307 153

Full Vacuum Rating— 30" (762mm) Hg

Our steam service ratings are very low in the interest of safety although our 70°F (21°C) pressure ratings are as high or higher than our competitors. All locations where failure could lead to personal injury or suffocation must be avoided. In dangerous locations we suggest housed expansion joints, solid loops, ball joints, packed devices etc. rather than thin walled flexible products regardless of manufacturer.

Consult factory with full location description as well as service conditions for higher pressure or temperature applications.

304 SS can be used up to 850°F (454°C) in applications such as engine exhaust.

When using VGWN products in copper or brass water or steam systems, dielectric couplings must be used on each end to prevent leakage from galvanic action.

**RATED MOVEMENTS**

- ±4" (100mm) All Directional Seismic Movement
- ±6" (150mm) Guided Thermal Movement Only

**VGWN DIMENSIONS AND PRESSURE RATINGS (American Units)**

Type	Pipe Size & End to End (in)	Live Length (in)	Corrugations per foot	A (in)	B (in)	C (in)	Rated Pressure @70°F (psi)
VGWN	2 X 36	20	58	23 1/4	24 1/4	25	360
VGWN	2 1/2 X 41	22	48	26	27	27 3/4	290
VGWN	3 X 46	24	46	28 7/8	30 1/8	31 1/8	280
VGWN	4 X 55	26	32	32 1/2	33 3/4	34 3/4	225
VGWN	5 X 64	30	29	38	39 1/2	40 1/2	200
VGWN	6 X 72	33	25	42 5/8	44 1/8	45 3/8	200
VGWN	8 X 86	36	23	49 1/4	50 3/4	52	200
VGWN	10 X 105	42	21	58 1/2	60 1/4	61 3/4	170
VGWN	12 X 120	48	20	67 3/4	69 1/2	71	170

**VGWN DIMENSIONS AND PRESSURE RATINGS (Metric Units)**

Type	Pipe Size & End to End (mm)	Live Length (mm)	Corrugations per meter	A (mm)	B (mm)	C (mm)	Rated Pressure @21°C (kg/cm <sup>2</sup> )
VGWN	50 X 914	508	190	591	591	635	25
VGWN	65 X 1041	559	157	660	686	705	20
VGWN	80 X 1168	610	151	733	765	791	19
VGWN	100 X 1397	660	105	826	857	883	16
VGWN	125 X 1626	762	95	965	1003	1029	14
VGWN	150 X 1829	838	82	1083	1121	1153	14
VGWN	200 X 2184	914	75	1251	1289	1321	14
VGWN	250 X 2667	1067	69	1486	1530	1568	12
VGWN	300 X 3048	1219	66	1721	1765	1803	12

End to End Tolerance: minus 1% plus 3%. Minimum Burst is four times the Rated Pressure. Safety factor of 4.  
 Size 12" (300mm) has double braid.

QTY	SIZE	TAG

QTY	SIZE	TAG