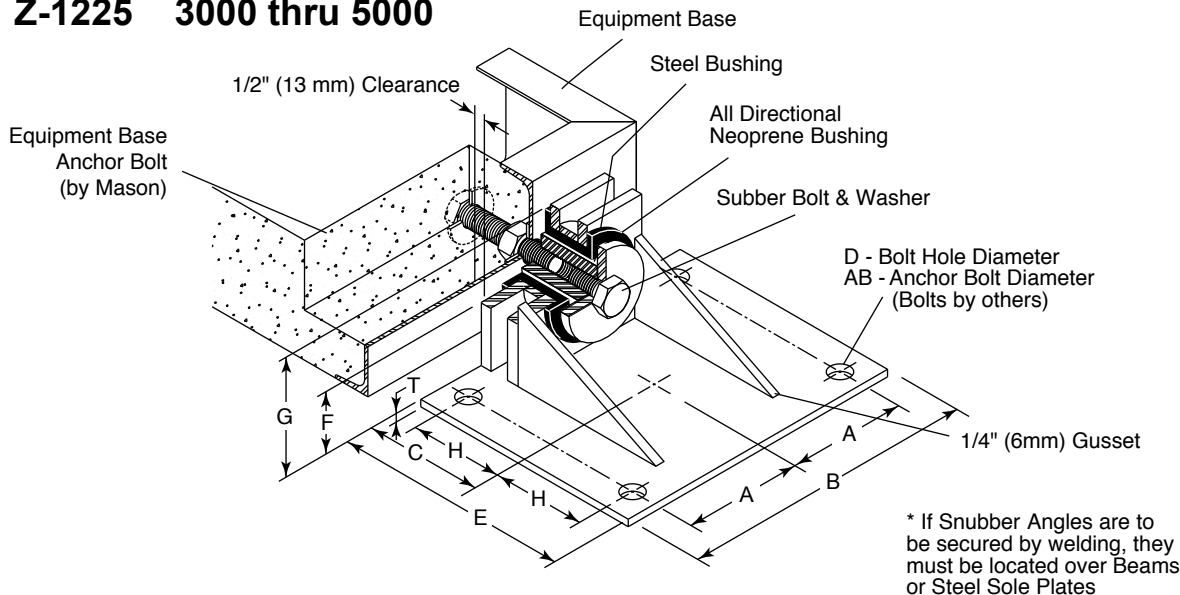


**MASON INDUSTRIES, Inc.**

Manufacturers of Vibration Control Products

350 Rabro Drive 2101 W. Crescent Ave., Suite D
Hauppauge, NY 11788 Anaheim, CA 92801
631/348-0282 714/535-2727
FAX 631/348-0279 FAX 714/535-5738
Info@Mason-Ind.com Info@MasonAnaheim.com
www.Mason-Ind.com

JOB NAME _____
CUSTOMER _____
CUSTOMER P.O. _____
MASON M.I. _____
DWG. NO. _____

Z-1225**All Directional
Seismic Snubber
Sizes 3000-5000****Z-1225 3000 thru 5000****TYPE Z-1225 1G ALL-DIRECTIONAL LOAD RATINGS and DIMENSIONS**

	Size	1G All Directional Load Ratings	A	AB	B	C	D	E	F	G	H	T	Equipment Base Anchor Bolt Size & Length
U.S.A. or British (lbs. & Inches)	3000	3000 lbs	4 3/4	3/4	12	5	7/8	10	3 1/4	6 3/8	3 3/4	3/8	7/8\"-9UNC-6\"
	5000	5000 lbs	6	1	15	6	1 1/8	12	3 1/2	6 3/8	4 3/4	3/8	1\"-8UNC-6\"
Metric (kgs. & mm)	3000	1361 kgs	121	19	305	127	22	254	83	162	95	10	7/8\"-9UNC-6\"
	5000	2268 kgs	152	25	381	152	29	305	89	162	121	10	1\"-8UNC-6\"

NOTES:

- Neoprene Bushings are 1/4\" (6mm) thick throughout.
- Operating clearances are 1/4\" (6mm).
- Set Base Anchors to protrude 3/4\" (19mm) from face to face.
- A continuous rod, threaded on each end and protruding 3/4\" (19mm) from both the faces of the base may be used to secure the threaded steel bushings in lieu of the individual Base Anchor Bolts.
- Normal clearance between base & floor is 1\" (25mm).
- Distance from Base Anchor Bolt centerline to bottom of base is F minus 1\".
- When 2\" clearance between base and floor is specified, use 1\" spacer plate under snubber angle.
- Earthquake restraining angles are to be installed after equipment is in operation to assure design clearances are maintained as follows:
 - Remove snubber bolt and washer.
 - Screw steel bushing on Base Anchor Bolt protrusion.
- Pass Restraining Angle over steel bushing so it is centered horizontally.
- Raise or lower base with spring adjustments or shim Restraining Angle so steel bushing is centered vertically.
- Set Restraining Angle so inside vertical face is 1/2\" (13mm) clear of base and parallel to it.
- *f. Mark and set AB anchor bolts or weld angle in position.
- Replace snubber bolt and washer and tighten in position.

TYPE	QTY.	TAG